

# A Quick Guide for the **pbdPROF** Package (Ver. 0.2-0)

Wei-Chen Chen<sup>1</sup>, Drew Schmidt<sup>2</sup>, Gaurav Sehrawat<sup>3</sup>, Pragneshkumar Patel<sup>2</sup>,  
George Ostrouchov<sup>4</sup>

<sup>1</sup>Department of Ecology and Evolutionary Biology,  
University of Tennessee,  
Knoxville, TN, USA

<sup>2</sup>National Institute for Computational Sciences,  
University of Tennessee,  
Knoxville, TN, USA

<sup>3</sup>Jaypee Institute of Information Technology  
Uttar Pradesh, India

<sup>4</sup>Computer Science and Mathematics Division,  
Oak Ridge National Laboratory,  
Oak Ridge, TN, USA

May 26, 2014

## Contents

<b>Acknowledgement</b>	<b>iv</b>
<b>I Installation</b>	<b>1</b>
<b>1 Introduction</b>	<b>1</b>
1.1 Supported MPI Profilers . . . . .	1
1.2 Choice of Profiler . . . . .	1
<b>2 Installation</b>	<b>2</b>
2.1 System Requirements . . . . .	2
2.2 The Big Picture . . . . .	2
2.3 Installing pbdPROF with fpmi . . . . .	3
2.3.1 Linking <b>pbdMPI</b> with pbdPROF . . . . .	4
2.3.2 Linking <b>pbdBASE</b> with pbdPROF . . . . .	4
2.3.3 Linking <b>Rmpi</b> with pbdPROF . . . . .	5
2.4 Installing pbdPROF with mpiP . . . . .	5
2.4.1 Linking <b>pbdMPI</b> with pbdPROF . . . . .	6
2.4.2 Linking <b>pbdBASE</b> with pbdPROF . . . . .	6
2.4.3 Linking <b>Rmpi</b> with pbdPROF . . . . .	7

---

<b>3</b>	<b>Testing pbdPROF Installation</b>	<b>7</b>
3.1	Test with <b>pbdMPI</b> . . . . .	7
3.2	Test with <b>Rmpi</b> . . . . .	8
<b>II</b>	<b>Profiling</b>	<b>9</b>
<b>4</b>	<b>Profiling with fpmi</b>	<b>9</b>
4.1	Demo of <b>pbdMPI</b> . . . . .	9
4.2	Demo of <b>pbdDMAT</b> . . . . .	10
4.3	Demo of <b>Rmpi</b> . . . . .	11
<b>5</b>	<b>Profiling with mpiP</b>	<b>12</b>
5.1	Demo of <b>pbdMPI</b> . . . . .	12
5.2	Demo of <b>pbdDMAT</b> . . . . .	13
5.3	Demo of <b>Rmpi</b> . . . . .	14
<b>6</b>	<b>Visualizing Profiler Outputs</b>	<b>15</b>
6.1	Visualizing fpmi Profiler Output . . . . .	16
6.2	Visualizing mpiP Profiler Output . . . . .	17
<b>III</b>	<b>Appendix</b>	<b>20</b>
<b>A</b>	<b>pbdPROF Troubleshooting</b>	<b>22</b>
A.1	Installation . . . . .	22
A.2	Running . . . . .	23
<b>B</b>	<b>References</b>	<b>24</b>

© 2013-2014 pbdR Core Team.

The findings and conclusions in this article have not been formally disseminated by the U.S. Department of Energy and should not be construed to represent any determination or policy of University, Agency, and National Laboratory.

Permission is granted to make and distribute verbatim copies of this vignette and its source provided the copyright notice and this permission notice are preserved on all copies.

This publication was typeset using L<sup>A</sup>T<sub>E</sub>X.

## Acknowledgement

Chen was supported in part by the Department of Ecology and Evolutionary Biology at the University of Tennessee, Knoxville, and a grant from the National Science Foundation (MCB-1120370.)

Chen and Ostrouchov were supported in part by the project “Visual Data Exploration and Analysis of Ultra-large Climate Data” funded by U.S. DOE Office of Science under Contract No. DE-AC05-00OR22725. Ostrouchov, Schmidt, and Patel were supported in part by the project “NICS Remote Data Analysis and Visualization Center” funded by the Office of Cyberinfrastructure of the U.S. National Science Foundation under Award No. ARRA-NSF-OCI-0906324 for NICS-RDAV center. Sehrawat was generously supported by Google for Google Summer of Code 2013.

## Part I

# Installation

This document is written to explain the main functions of **pbDPROF** (Chen *et al.*, 2013), version 0.2-0. Every effort will be made to ensure future versions are consistent with these instructions, but features in later versions may not be explained in this document.

Information about the functionality of this package, and any changes in future versions can be found on website: “Programming with Big Data in R” at <http://r-pbd.org/>.

## 1 Introduction

The goal of **pbDPROF** is to utilize external MPI profiling libraries to profile parallel R code and understand hidden MPI communications between processors. The number of communications, sizes of messages, times, and types of functions calls all affect program performance, and so having these measurements can greatly aid in debugging and algorithm design.

An MPI profiling libraries is able to hijack calls to MPI functions and then capture the profiling information (such as that described above), all without disturbing the execution of the original program.

The current main features of **pbDPROF** include:

1. the support of several profiling libraries
2. provide linking information to **pbDR** (Ostrouchov *et al.*, 2012) and other MPI-using R packages
3. output profiling information associated with MPI calls
4. parse and summarize profiling information

### 1.1 Supported MPI Profilers

As of version 0.2-0 of **pbDPROF**, the officially supported MPI profilers are

- **fpmpi** (Gropp, 2000), and
- **mpiP** (Vetter and McCracken, 2001)

with plans to eventually support additional profilers, including **TAU** (Shende and Malony, 2006).

### 1.2 Choice of Profiler

The **pbDPROF** package currently uses the **fpmpi** library by default. More explicitly, a source copy of **fpmpi** is located at `pbDPROF/src/fpmi` of the **pbDPROF** source. Although we bundle **pbDPROF** with **fpmpi**, it is not the best MPI profiler (though it may be sufficient for your needs). The results from other libraries, such as **mpiP**, are much more thorough and may lead to much deeper insights. Additionally, **fpmpi** does not handle profiler output file naming nearly as well as the others (see [Section 3](#)). However, **fpmpi** is the easiest to install.

If **fpmpi** is used, a static library will be built and placed in `pbDPROF/lib/libfpmpi.a` of the **pbDPROF** install directory. However, external profiling libraries such as **mpiP**, **TAU**, or even **fpmpi** can be also linked with **pbDPROF** by passing a suitable `--configure-args` argument during an installation via `R CMD INSTALL`. We will explain this procedure in depth in [Section 2.3](#) using an external **fpmpi** and **mpiP** as an example, **TAU** will be added in next release.

While it is possible to link with other profiling libraries, at the time of writing (for version 0.2-0), we only support **fpmpi** and **mpiP**. We anticipate full of **TAU** for the next version of this package.

## 2 Installation

In this section, we will describe the various ways that one can build **pbDPROF** and link it with MPI-using R packages. For installation troubleshooting, see [Appendix A](#).

### 2.1 System Requirements

The **pbDPROF** package requires an MPI installation, such as OpenMPI or MS-MPI. Additionally, the package is basically useless without some kind of MPI-using R package, such as **pbDMPI** ([Chen \*et al.\*, 2012a](#)) or **Rmpi** ([Yu, 2002](#)). For information regarding how to install MPI or **pbDMPI**, please see the **pbDMPI** vignette ([Chen \*et al.\*, 2012b](#)) or the pbDR website <http://r-pbd.org/install>.

### 2.2 The Big Picture

Before pressing on, let us stop to take a moment and understand the “big picture” here. The following sections will contain *more than sufficient* detail, to the point where it would be easy to lose sight of the proverbial forest for the trees.

For the remainder of this document, we will be providing information for two fairly distinct groups of people: R-level MPI package developers, and C/Fortran-level MPI package developers. If you are in the former category, then the use of this package is a bit simpler for you. All you need to do is get **pbDPROF** installed and reinstall your MPI-using package of choice (**pbDMPI**, **Rmpi**, etc. ...). Each package that directly uses MPI (packages produced by developers in the latter category) will have to explicitly support **pbDPROF** (or the reader will have to get his/her hands dirty in another developer’s makefiles — an unpleasant business). It is worth nothing here that there are instructions in this document for how a developer of the second kind could explicitly add **pbDPROF** support to his/her package.

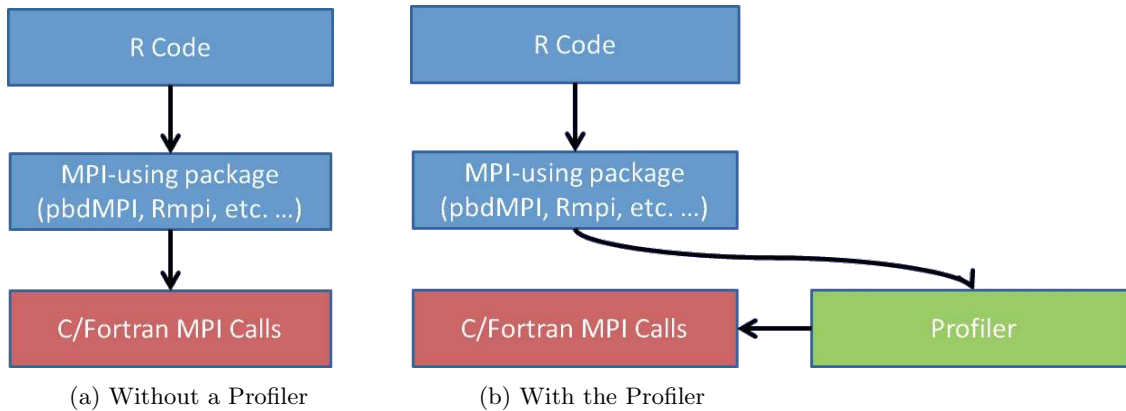
So why the need to reinstall things? It boils down to how the profilers actually work. Under normal circumstances, a user writes some R code from an MPI-using package (e.g., `allreduce(x)` from **pbDMPI**, `mpi.allreduce(x, type=2)` from **Rmpi**, etc. ...).

This then makes a call to some C or Fortran code which directly interfaces with MPI. You can see this pictures in [Figure 1a](#). When you use a profiler, you instead hijack the calls to MPI from the C/Fortran code so that some metadata can be stored about MPI usage.

This process is represented in [Figure 1b](#). Hopefully it should be clear what, and when, something should be reinstalled. For the sake of completion, we summarize the possibilities below:

To *enable* MPI profiling:

1. install **pbDPROF**



2. reinstall an MPI-using package and link it with **pbdPROF**
3. write and execute your MPI-using R code as normal
4. use the **pbdPROF** utilities `read.prof()`, `plot()`, etc. for interpreting profiling results

To *disable* MPI profiling:

1. reinstall any MPI-using package that was linked it with **pbdPROF**, and this time *do not* link with **pbdPROF**

### 2.3 Installing pbdPROF with fpmpi

We can install **pbdPROF** using the internal **fpmpi** library via

Shell Command

```
R CMD INSTALL pbdPROF_0.1-0.tar.gz
```

By default, this compiles `pbdPROF/src/fpmpi/*` of the **pbdPROF** source, generates a static library `libfpmpi.a`, and installs the library to `pbdPROF/lib/` of the **pbdPROF** install. No shared library is generated or needed, so the directory `pbdPROF/libs/` is empty, i.e., there is no need to build `pbdPROF.so`. The linking argument is saved in `Makeconf` and installed to `pbdPROF/etc/` for later use by other packages, such as **pbdMPI** or **Rmpi**.

However, if we choose, we can link with an external **fpmpi** library, via

Shell Command

```
R CMD INSTALL pbdPROF_0.1-0.tar.gz \
  --configure-args="--with-fpmpi='/path_to_fpmpi/lib/libfpmpi.a'"
```

or

Shell Command

```
R CMD INSTALL pbdPROF_0.1-0.tar.gz \
  --configure-args="--with-fpmpi='-L/path_to_fpmpi/lib -lfpmpi'"
```

Or the conventional method in R console

Shell Command

```
install.packages("pbdPROF",  
  configure.args=c("--with-fpmpi=/path/to/your/fpmpi/lib/libfpmpi.a"))
```

Or

Shell Command

```
install.packages("pbdPROF",  
  configure.args=c("--with-fpmpi=-L/path/to/your/fpmpi/lib -lfpmpi"))
```

Since **fpmpi** only builds a static library **libfpmpi.a**, there is no difference between these two installations of **pbdPROF**. This only provides the linking arguments, either `/path_to_fpmpi/lib/libfpmpi.a` or `-L/path_to_fpmpi/lib -lfpmpi`, which is saved in `Makeconf` and installed to `pbdPROF/etc/` for later use by other packages, such as **pbdMPI** or **Rmpi**.

### 2.3.1 Linking pbdMPI with pbdPROF

Reinstall **pbdMPI** via

Shell Command

```
R CMD INSTALL pbdMPI_1.0-0.tar.gz --configure-args="--enable-pbdPROF"
```

Package developers who are directly interfacing with MPI functions (via C or Fortran) should note that `pbdMPI/R/get_conf.r` and `pbdMPI/R/get_lib.r` are utilized in `pbdMPI/configure.ac` (used to generate `pbdMPI/configure`) to determine an appropriate linking flag `PROF_LDFLAGS` based on preset flags in `pbdPROF/etc/Makeconf`.

If the internal library is used in **pbdPROF**, then the path to `pbdPROF/lib/libfpmpi.a` is set in the flag `PKG_LIBS` of `pbdMPI/src/Makevars.in`. If the external library is used in **pbdPROF**, then the linking arguments either `/path_to_fpmpi/lib/libfpmpi.a` or `-L/path_to_fpmpi/lib -lfpmpi` is set in the flag `PKG_LIBS` of `pbdMPI/src/Makevars.in`. Therefore, the **pbdMPI** can be intercepted by the **fpmpi** library when MPI function calls are evoked.

No matter which library is used, internal or external, the `PROF_LDFLAGS` in `pbdMPI/etc/Makefile` provides the linking information to the profiling library. It is also used in `PKG_LIBS`, which will be exported to other **pbdR** packages at installation via the flag `SPMD_LDFLAGS`. Therefore there is no need for additional flags in `R CMD INSTALL` when reinstalling packages for profiling.

### 2.3.2 Linking pbdBASE with pbdPROF

For further profiling, such as **pbdBASE** (Schmidt *et al.*, 2012), one may reinstall the package, via

Shell Command

```
R CMD INSTALL pbdBASE_0.2-2.tar.gz
```

There is no need to provide any flag since `pbdMPI/etc/Makefile` has the information and installation of **pbdBASE** already considers it. Note that since both packages (**pbdMPI** and **pbdBASE**) have MPI-using C/Fortran functions involved, it is necessary to link with **pbdPROF** in order to profile communications evoked by the package.



### 2.3.3 Linking Rmpi with pbdPROF

Reinstall **Rmpi** via

Shell Command

```
wget https://github.com/snoweye/Rmpi_PROF/archive/master.zip
unzip master.zip
mv Rmpi_PROF-master Rmpi
find ./Rmpi -type f -perm 777 -print -exec chmod 644 {} \;
find ./Rmpi -type d -perm 777 -print -exec chmod 755 {} \;
chmod 755 ./Rmpi/configure
chmod 755 ./Rmpi/cleanup
chmod 755 ./Rmpi/inst/*.sh
R CMD build --no-resave-data Rmpi
R CMD INSTALL Rmpi_0.6-6.tar.gz --configure-args="--enable-pbdPROF"
```

Note that **0.6-6** is not an official release of **Rmpi**. It is a modified version of 0.6-3 and it is currently available at [https://github.com/snoweye/Rmpi\\_PROF](https://github.com/snoweye/Rmpi_PROF). The authors of **Rmpi** have plans to eventually incorporate these changes, but this can be used as a temporary measure.

## 2.4 Installing pbdPROF with mpiP

We have to install **mpiP** externally from its source code to use it in **pbdPROF**. We can install **pbdPROF** using the external **mpiP** library via

Shell Command

```
R CMD INSTALL pbdPROF_0.2-0.tar.gz
  --configure-args="--with-mpiP='/path/to/your/mpiP/lib/libmpiP.a' "
```

Or

Shell Command

```
R CMD INSTALL pbdPROF_0.2-0.tar.gz
  --configure-args="--with-mpiP='-L/path/to/your/mpiP/lib lmpiP' "
```

Or the conventional method in R console

Shell Command

```
install.packages("pbdPROF",
  configure.args=c("--with-mpiP=/path/to/your/mpiP/lib/libmpiP.a"))
```

Or

Shell Command

```
install.packages("pbdPROF",
  configure.args=c("--with-mpiP=-L/path/to/your/mpiP/lib -lmpiP"))
```

`pbdPROF/lib/` is empty, i.e., there is no need to build `pbdPROF.so`. The linking argument is saved in `Makeconf` and installed to `pbdPROF/etc/` for later use by other packages, such as **pbdMPI** or **Rmpi**. Since **mpiP** has external dependency `libfpmpi.a` on `libunwind` so while installing **mpiP** you are suggested to use the below command while configuring **mpiP**. This only provides the linking arguments, either

R Script

```
./configure --disable-libunwind CPPFLAGS="-fPIC -I/usr/lib/openmpi/include"
LDFLAGS="-L/usr/lib/openmpi/lib -lmpi"
```

since one has changed the linking so need to reinstall packages depend on **CodepbdPROF**

#### 2.4.1 Linking pbdMPI with pbdPROF

Reinstall **pbdMPI** via

Shell Command

```
R CMD INSTALL pbdMPI_1.0-0.tar.gz --configure-args="--enable-pbdPROF"
```

Package developers who are directly interfacing with MPI functions (via C or Fortran) should note that `pbdMPI/R/get_conf.r` and `pbdMPI/R/get_lib.r` are utilized in `pbdMPI/configure.ac` (used to generate `pbdMPI/configure`) to determine an appropriate linking flag `PROF_LDFLAGS` based on preset flags in `pbdPROF/etc/Makeconf`.

If your `pbdMPI` is correctly installed with all correct linking you will have the screenshot just similar to below output during installation of **pbdMPI** or else you might get error

```
***** Results of pbdMPI package configure *****
>> TMP_INC = /usr/local/include
>> TMP_LIB = /usr/local/lib
>> MPI_ROOT =
>> MPITYPE = OPENMPI
>> MPI_INCLUDE_PATH = /usr/local/include
>> MPI_LIBPATH = /usr/local/lib
>> MPI_LIBS = -lutil -lpthread
>> MPI_DEFS = -DMPI2
>> MPI_INCL2 =
>> PKG_CPPFLAGS = -I/usr/local/include -DMPI2 -DOPENMPI
>> PKG_LIBS = /home/g/Documents/new_life/lib/libmpiP.a -L/usr/local/lib -lmpi
           -lutil -lpthread
>> PROF_LDFLAGS = /home/g/Documents/new_life/lib/libmpiP.a
*****
```

No matter which library is used, internal or external, the `PROF_LDFLAGS` in `pbdMPI/etc/Makefile` provides the linking information to the profiling library. It is also used in `PKG_LIBS`, which will be exported to other `pbdR` packages at installation via the flag `SPMD_LDFLAGS`. Therefore there is no need for additional flags in `R CMD INSTALL` when reinstalling packages for profiling.

#### 2.4.2 Linking pbdBASE with pbdPROF

For further profiling, such as **pbdBASE** (Schmidt *et al.*, 2012), one may reinstall the package, via

Shell Command

```
R CMD INSTALL pbdBASE_0.2-2.tar.gz
```

There is no need to provide any flag since `pbdMPI/etc/Makefile` has the information and installation of **pbdBASE** already considers it. Note that since both packages (**pbdMPI** and **pbdBASE**) have MPI-using

C/Fortran functions involved, it is necessary to link with **pbDPROF** in order to profile communications evoked by the package.

### 2.4.3 Linking Rmpi with pbDPROF

Reinstall **Rmpi** via

Shell Command

```
wget https://github.com/snoweye/Rmpi_PROF/archive/master.zip
unzip master.zip
mv Rmpi_PROF-master Rmpi
find ./Rmpi -type f -perm 777 -print -exec chmod 644 {} \;
find ./Rmpi -type d -perm 777 -print -exec chmod 755 {} \;
chmod 755 ./Rmpi/configure
chmod 755 ./Rmpi/cleanup
chmod 755 ./Rmpi/inst/*.sh
R CMD build --no-resave-data Rmpi
R CMD INSTALL Rmpi_0.6-4.tar.gz --configure-args="--enable-pbDPROF"
```

Note that **0.6-4** is not an official release of **Rmpi**. It is a modified version of 0.6-3 and it is currently available at [https://github.com/snoweye/Rmpi\\_PROF](https://github.com/snoweye/Rmpi_PROF). The authors of **Rmpi** have plans to eventually incorporate these changes, but this can be used as a temporary measure.

## 3 Testing pbDPROF Installation

Here, we provide two simple R scripts, one for **pbDMPI** and one for **Rmpi**, to test the installation and profiling capabilities of **pbDPROF**. Assuming all went well, then a profiler output file will be produced (in the directory where you executed the above command). The name of the file depends on how **pbDPROF** was built:

- **fpmpi**: the profiler output file will always be called `fpmpi_profile.txt`.
- **mpiP**: the profiler output file will be named according to the scheme `R.ncores.PID.1.mpiP`, where `ncores` is the actual number of cores used, and `PID` is the job PID that was used.

Here again, **mpiP** has several advantages over **fpmpi**. For one, **fpmpi** will always overwrite old profiler output in the same directory. Additionally, **fpmpi** profiler outputs give no context to the calling command, whereas **mpiP** gives the calling command (and whence, which R script was used to generate the profiler output) on the second line of the profiler output.

If you followed the instructions found in [Section 2](#), but no profiler output is produced, then please see the troubleshooting guide, [Appendix A](#).

For the remainder, we will be using **fpmpi** in examples.

### 3.1 Test with pbDMPI

Below we provide sample scripts to test that the installation of **pbDPROF** was successful. For **pbDMPI**, use:

Test script for pbDMPI

```

1 ### Save this in a file: prof_pbdMPI.r
2 library(pbdMPI, quiet = TRUE)
3 init()
4
5 set.seed(comm.rank())
6 x <- allreduce(rnorm(100), op = "sum")
7
8 finalize()

```

and run this code by

R Script

```
mpirun -np 2 Rscript prof_pbdMPI.r
```

The **fpmpi** profiling output from the file `fpmpi_profile.txt` may contain:

```

Details for each MPI routine
                Average of sums over all processes
                                % by message length
                                0.....1.....1.....
                                (max over processes [rank])
                                K           M
MPI_Allreduce:
  Calls      :           2           2 [ 0] 05000000050000000000000000000000
  Time       :   3.61e-05   3.72e-05 [ 0] 07000000030000000000000000000000
  Data Sent  :           804          804 [ 0]
  SyncTime  :   0.00149    0.00287 [ 0] 0*0000000.000000000000000000000000
  By bin    : 1-4 [1,1] [ 2.5e-05, 2.72e-05] [ 4.1e-05, 0.00286]
              : 513-1024 [1,1] [ 1e-05, 1e-05] [ 1.1e-05,
              :           7.61e-05]

```

In this R script, one MPI C function `MPI_Allreduce` is called twice and 804 bytes are sent that a hundred of double precision (8 bytes) for 100 normal random variables, and one integer (4 bytes) for checking data type to call the corresponding S4 method.

### 3.2 Test with Rmpi

For **Rmpi**, use:

Test script for pbdMPI

```

1 ### Save this in a file: prof_Rmpi.r
2 library(Rmpi, quiet = TRUE)
3 mpi.comm.dup(0, 1)
4
5 set.seed(mpi.comm.rank())
6 x <- mpi.allreduce(rnorm(100), type = 2, op = "sum")
7
8 mpi.quit()

```

and run this code by

R Script

```
mpirun -np 2 Rscript prof_Rmpi.r
```

The `fpmpi` profiling output from the file `fpmpi_profile.txt` may contain:

```

Details for each MPI routine
      Average of sums over all processes
                                % by message length
                                0.....1.....1.....
                                (max over processes [rank])      K      M
MPI_Allreduce:
  Calls      :           1           1 [ 0] 000000000*0000000000000000000
  Time       :   4.01e-05   4.41e-05 [ 1] 000000000*0000000000000000000
  Data Sent  :           800          800 [ 0]
  SyncTime   :   0.00103   0.00204 [ 1] 000000000*0000000000000000000
  By bin     : 513-1024   [1,1]   [ 3.6e-05, 4.41e-05] [ 2.79e-05, 0
.00204]
MPI_Comm_dup:
  Calls      :           1
  Time       :   5.81e-05
  SyncTime   :   0.000211

```

Two MPI C functions `MPI_Allreduce` and `MPI_Comm_dup` are called one time for each.

## Part II

# Profiling

In this part, we will profile some much more substantive examples. This assumes that `pbdPROF` has been correctly configured and installed. Make sure you can produce profiler outputs as described in [Section 3](#) before proceeding. If not, please see [Appendix A](#).

## 4 Profiling with `fpmpi`

### 4.1 Demo of `pbdMPI`

The `allreduce.r` script is originally in `pbdMPI/demo/` and can be profiled by

R Script

```
mpiexec -np 2 Rscript -e "demo(allreduce, 'pbdMPI', ask=F, echo=F)"
```

which will provide an output file `fpmpi_profile.txt`. Part of output is listed in the next as

```

Processes:      2
Execute time:   1.176
Timing Stats: [seconds] [min/max]      [min rank/max rank]
wall-clock: 1.176 sec 1.171488 / 1.180277    0 / 1
user: 0.378 sec 0.360000 / 0.396000    0 / 1
sys: 0.07 sec 0.040000 / 0.100000    1 / 0

Average of sums over all processes
Routine          Calls      Time Msg Length      %Time by message length

```

```

0.....1.....1.....
K      M
MPI_Allreduce      :      10    0.000118      188 06100300000000000000000000000000
MPI_Barrier        :      21    0.0054

```

Details for each MPI routine  
Average of sums over all processes  
% by message length  
(max over 0.....1.....1.....  
processes [rank]) K M

```

MPI_Allreduce:
Calls      :      10      10 [ 0] 05100400000000000000000000000000
Time       :    0.000118    0.000119 [ 0] 06100300000000000000000000000000
Data Sent  :      188      188 [ 0]
SyncTime   :    0.000312    0.000453 [ 0] 07.002000000000000000000000000000
By bin     : 1-4 [5,5] [ 7.01e-05, 7.01e-05] [ 0.000117, 0.000343]
: 5-8 [1,1] [ 7.87e-06, 9.06e-06] [ 9.06e-06, 9.06e-06]
: 33-64 [4,4] [ 3.91e-05, 4.03e-05] [ 4.51e-05, 0.0001]
MPI_Barrier:
Calls      :      21
Time       :    0.0054

```

Two MPI C functions `MPI_Allreduce` and `MPI_Barrier` are evoked inside this R code. The `MPI_Allreduce` is called 10 times, span 0.000118 seconds, and 188 bytes are sent. The `MPI_Barrier` is called 21 times and span 0.0054 seconds.

## 4.2 Demo of pbdDMAT

The `svd.r` is originally in `pbdDMA/demo/` ([Schmidt \*et al.\*, 2012](#)) and can be profiled by

R Script

```
mpiexec -np 2 Rscript -e "demo(svd,'pbdDMAT',ask=F,echo=F)"
```

which will provide an output file `fpmpi_profile.txt`. Part of output is listed in the next as

```

Processes: 2
Execute time: 1.774
Timing Stats: [seconds] [min/max] [min rank/max rank]
wall-clock: 1.774 sec 1.766181 / 1.781962 1 / 0
user: 0.962 sec 0.956000 / 0.968000 1 / 0
sys: 0.046 sec 0.044000 / 0.048000 0 / 1

```

Average of sums over all processes

```

Routine      Calls      Time Msg Length      %Time by message length
0.....1.....1.....
K      M
MPI_Allreduce      :      12    0.000108      72 06400000000000000000000000000000
MPI_Barrier        :      8    0.000784

```

Details for each MPI routine  
Average of sums over all processes  
% by message length  
(max over 0.....1.....1.....  
processes [rank]) K M

```

MPI_Allreduce:

```

```

Calls      :           12           12 [  0] 0550000000000000000000000000000000000000
Time       :    0.000108    0.000113 [  0] 0640000000000000000000000000000000000000
Data Sent  :           72           72 [  0]
SyncTime   :    0.000143    0.00016 [  1] 0640000000000000000000000000000000000000
By bin     : 1-4 [6,6] [ 5.44e-05, 6.91e-05] [ 6.91e-05, 8.89e-05]
           : 5-8 [6,6] [ 4.36e-05, 4.79e-05] [ 5.72e-05, 7.08e-05]
MPI_Barrier:
Calls      :           8
Time       :    0.000784

```

Two MPI C functions `MPI_Allreduce` and `MPI_Barrier` are evoked inside this R code. The `MPI_Allreduce` is called 12 times, span 0.000108 seconds, and 72 bytes are sent. The `MPI_Barrier` is called 8 times and span 0.000784 seconds.

### 4.3 Demo of Rmpi

The `masterSlavePI.r` is originally in `Rmpi/demo/` and can be profiled by

R Script

```
mpiexec -np 4 Rscript -e "demo(masterSlavePI,'Rmpi',ask=F,echo=F)"
```

which will provide an output file `fpmpi_profile.txt`. Part of output is listed in the next as

```

Processes:      1
Execute time:   0.05362
Timing Stats: [seconds] [min/max]           [min rank/max rank]
wall-clock: 0.05362 sec 0.053622 / 0.053622     0 / 0
user: 0.236 sec 0.236000 / 0.236000     0 / 0
sys: 0.052 sec 0.052000 / 0.052000     0 / 0

Average of sums over all processes
Routine          Calls           Time Msg Length   %Time by message length
0.....1.....1.....
K                M
MPI_Reduce       :           1    6.51e-05           8 00*00000000000000000000000000000000

Details for each MPI routine
Average of sums over all processes
% by message length
(max over        0.....1.....1.....
processes [rank])          K          M
MPI_Reduce:
Calls      :           1           1 [  0] 00*00000000000000000000000000000000
Time       :    6.51e-05    6.51e-05 [  0] 00*00000000000000000000000000000000
Data Sent  :           8           8 [  0]
By bin     : 5-8 [1,1] [ 6.51e-05, 6.51e-05]

```

One MPI C function `MPI_Reduce` is evoked inside this R code. The `MPI_Reduce` is called only 1 time, span  $6.51e-05$  seconds, and 8 bytes are sent. Note that there is only one processor (master in `comm=0`) profiled by `fpmpi`, and the other three processors (slaves in `comm=1`) are not.

## 5 Profiling with mpiP

### 5.1 Demo of pbdMPI

The `allreduce.r` is originally in `pbMPI/demo` and can be profiled by

R Script

```
mpiexec -np 2 Rscript -e "demo(allreduce,'pbdMPI',ask=F,echo=F)"
```

which will produce an output file `allreduce.r.mpiP` part of file is listed below

```
@ Collector Rank      : 0
@ Collector PID      : 24033
@ Final Output Dir   : .
@ Report generation  : Single collector task
@ MPI Task Assignment : 0
@ MPI Task Assignment : 1

-----
@--- MPI Time (seconds) -----
-----
Task   AppTime  MPITime  MPI%
0      0.153    0.00207  1.35
1      0.155    0.0284   18.35
*      0.308    0.0305   9.90
-----
@--- Callsites: 6 -----
-----
ID Lev File/Address      Line Parent_Funct      MPI_Call
1   0 0x7f335d1108c3      [unknown]           Allreduce
2   0 0x7f335d110acb      [unknown]           Barrier
3   0 0x7f335d1107f3      [unknown]           Allreduce
4   0 0x7f2ded6f68c3      [unknown]           Allreduce
5   0 0x7f2ded6f6acb      [unknown]           Barrier
6   0 0x7f2ded6f67f3      [unknown]           Allreduce
-----
@--- Aggregate Time (top twenty, descending, milliseconds) -----
-----
Call           Site      Time      App%      MPI%      COV
Barrier        5         28.1     9.13     92.21     0.00
Barrier        2          1.63     0.53     5.36     0.00
Allreduce      3          0.322    0.10     1.06     0.00
Allreduce      6          0.217    0.07     0.71     0.00
Allreduce      1          0.117    0.04     0.38     0.00
Allreduce      4          0.083    0.03     0.27     0.00
-----
@--- Aggregate Sent Message Size (top twenty, descending, bytes) -----
-----
Call           Site      Count      Total      Avrg      Sent%
Allreduce     1          4          160         40     42.55
Allreduce     4          4          160         40     42.55
Allreduce     3          6           28         4.67     7.45
Allreduce     6          6           28         4.67     7.45
```



The above statistics shows various criteria for the program run. The “MPI Time” shows running time per process while executing the `allreduce.r`. There are four columns:

- **Task** which is the rank of the processor,
- **AppTime** which is the application level runtime having values 0.153 and 0.155 seconds for the first (0) and second (1) ranks, respectively,
- **MPITime** which is the MPI level runtime of code having values 0.00207 seconds for the first rank and 0.0284 seconds for the second rank, and
- **MPI%** which is the percentage of MPITime in AppTime having values 1.35% and 18.35% for rank 0 processor and rank 1, respectively.

The `*` shows the sums of total ranks in respective columns.

The “Callsites” division shows 6 MPI calls in these two processors are evoked. One **Barrier** and two types of **Allreduce** (one for **integer** and one for **double**) for each processor. The general `allreduce()` function in **pbdMPI** is a S4 method which checks data type first (**matrix**, **array**, **integer**, or **double**) using `MPI_Allreduce`, then bases on the data type to evoke the corresponding S3 function using the other call to `MPI_Allreduce`. The **Barrier** is mainly evoked from `comm.cat()` and `comm.print()` in **pbdMPI**.

Furthermore, the **mpiP** library provides deeper analyses of each MPI Calls like “Aggregate Time” and “Aggregate Sent Message Size”. In “Aggregate Time” division, the **Call** column shows information of MPI calls, **Barrier** called twice and **Allreduce** called four times. Note that for longer runs, only top twenty records are reported. The **Barrier** calls at the site 5 (ID 5 in the “Callsites” division) ran for 28.1 milliseconds of which 9.13% is application level aggregate time percentage and 92.21% is MPI level aggregate time percentage. Similarly, in “Aggregate Sent Message Size” division, per bytes information of each MPI call is elaborated. For example, for **Allreduce** at the site 1 has the count value of 4 while total message size is 160 bytes, on average 40 bytes are there. Also, the sent percentage is 42.55% for **Allreduce** at the site 1.

## 5.2 Demo of pbdDMAT

The `svd.r` is originally in `pbdDMA/demo/` ([Schmidt et al., 2012](#)) and can be profiled by

R Script

```
mpiexec -np 2 Rscript -e "demo(svd,'pbdDMAT',ask=F,echo=F)"
```

which will provide an output file `svd.r.mpiP`. Part of output is listed in the next as

```
@ Collector Rank      : 0
@ Collector PID      : 25363
@ Final Output Dir   : .
@ Report generation  : Single collector task
@ MPI Task Assignment : 0
@ MPI Task Assignment : 1

-----
@--- MPI Time (seconds) -----
-----
Task   AppTime  MPITime   MPI%
0      0.768    0.000527  0.07
1      0.784    0.00195   0.25
*      1.55     0.00248   0.16
```

```

-----
@--- Callsites: 6 -----
-----
ID Lev File/Address          Line Parent_Funct          MPI_Call
1  0 0x7f676ef298c3          [unknown]                Allreduce
2  0 0x7f676ef29acb          [unknown]                Barrier
3  0 0x7f676ef297f3          [unknown]                Allreduce
4  0 0x7fa461caf8c3          [unknown]                Allreduce
5  0 0x7fa461cafacb          [unknown]                Barrier
6  0 0x7fa461caf7f3          [unknown]                Allreduce
-----
@--- Aggregate Time (top twenty, descending, milliseconds) -----
-----
Call          Site      Time      App%      MPI%      COV
Barrier       5         1.55      0.10      62.40     0.00
Allreduce     6         0.295     0.02      11.90     0.00
Barrier       2         0.256     0.02      10.33     0.00
Allreduce     3         0.177     0.01      7.14      0.00
Allreduce     4         0.11      0.01      4.44      0.00
Allreduce     1         0.094     0.01      3.79      0.00
-----
@--- Aggregate Sent Message Size (top twenty, descending, bytes) -----
-----
Call          Site      Count      Total      Avrg      Sent%
Allreduce     1         6          48         8         33.33
Allreduce     4         6          48         8         33.33
Allreduce     3         6          24         4         16.67
Allreduce     6         6          24         4         16.67

```

The above statistics shows various criteria the code has been profiled for the program `svd.r`. The interpretation is similar to that of `allreduce.r` above. However, these `MPI_Allreduce` functions are mainly called by functions of **ScaLAPACK** (Blackford *et al.*, 1997) via `pbdBASE` (Schmidt *et al.*, 2012) and `pbdSLAP` (Chen *et al.*, 2012c).

### 5.3 Demo of Rmpi

The `masterSlavePI.r` is originally in `Rmpi/demo/` and can be profiled by

R Script

```
mpiexec -np 4 Rscript -e "demo(masterslavePI, 'Rmpi', ask=F, echo=F)"
```

which will provide an output file `masterSlavePI.r.mpiP`. Part of output is listed in the next as

```

@ Collector Rank          : 0
@ Collector PID          : 25839
@ Final Output Dir       : .
@ Report generation      : Single collector task
@ MPI Task Assignment    : 0
-----
@--- MPI Time (seconds) -----
-----
Task  AppTime  MPITime  MPI%
0     0.0303  0.00125  4.12
*     0.0303  0.00125  4.12

```

```

-----
@--- Callsites: 4 -----
-----
ID Lev File/Address          Line Parent_Funct          MPI_Call
1  0 0x7f8cdbc03628          [unknown]                Comm_free
2  0 0x7f8cdbc03a2e          [unknown]                Intercomm_merge
3  0 0x7f8cdbc02ce6          [unknown]                Reduce
4  0 0x7f8cdbc0398b          [unknown]                Comm_free
-----
@--- Aggregate Time (top twenty, descending, milliseconds) -----
-----
Call          Site      Time      App%      MPI%      COV
Intercomm_merge  2        1.06     3.52     85.47     0.00
Reduce        3        0.102    0.34     8.19     0.00
Comm_free     4        0.053    0.18     4.25     0.00
Comm_free     1        0.026    0.09     2.09     0.00
-----
@--- Aggregate Sent Message Size (top twenty, descending, bytes) -----
-----
Call          Site      Count      Total      Avrg Sent%
Reduce        3         1          8          8 100.00
-----
@--- Callsite Time statistics (all, milliseconds): 4 -----
-----
Name          Site Rank  Count      Max      Mean      Min      App%      MPI%
Comm_free     1      0      1      0.026    0.026    0.026    0.09     2.09
Comm_free     1      *      1      0.026    0.026    0.026    0.09     2.09

Comm_free     4      0      1      0.053    0.053    0.053    0.18     4.25
Comm_free     4      *      1      0.053    0.053    0.053    0.18     4.25

Intercomm_merge  2      0      1      1.06     1.06     1.06     3.52     85.47
Intercomm_merge  2      *      1      1.06     1.06     1.06     3.52     85.47

Reduce        3      0      1      0.102    0.102    0.102    0.34     8.19
Reduce        3      *      1      0.102    0.102    0.102    0.34     8.19
-----
@--- Callsite Message Sent statistics (all, sent bytes) -----
-----
Name          Site Rank  Count      Max      Mean      Min      Sum
Reduce        3      0      1          8          8          8          8
Reduce        3      *      1          8          8          8          8

```

The above statistics shows various criteria the code has been profiled for the program `masterSlavePI.r`. Three main MPI calls are used in this program: `MPI_Intercomm_merge`, `MPI_Reduce` and `MPI_Comm_free` since `Rmpi` uses the master/workers framework.

## 6 Visualizing Profiler Outputs

Several useful plotting methods have been provided in the `pbdPROF` package for visualizing `fpmpi` and `mpiP` profiler outputs.

In addition, the data is stored in a fairly simple format, so it should be simple enough to create your own plots if these do not suffice.

## 6.1 Visualizing fpmi Profiler Output

An example parsed fpmi dataset is included in the **pbdPROF** package, called `fpmi_example`. It contains the profiler output of the fpmi library example `prof_test`, located in the example subtree of the library source. The example was run with 4 processors, and the parsed profiler output is as follows:

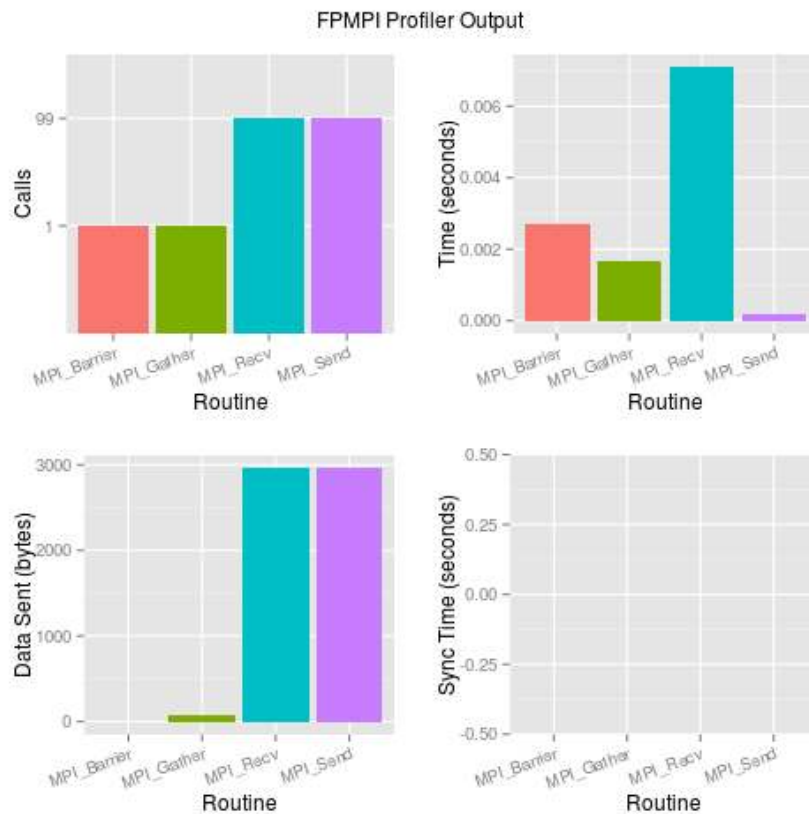
```
An fpmi profiler object:
$Routine
[1] "MPI_Allreduce" "MPI_Recv"      "MPI_Send"      "MPI_Barrier"

$Calls
[1] 1 1 1 2

$Time
[1] 8.46e-06 4.05e-06 1.91e-06 1.75e-05

$Data.Sent
[1] 40 40 40 0

$SyncTime
[1] 3.46e-06 0.00e+00 0.00e+00 0.00e+00
```



fpmi Plots

The package includes some default plots which can easily be produced, either by `plot()` or `autoplot()` calls. [Figure 2](#) shows the plots which can be produced from the following script.

```

1 > library(pbdPROF)
2 > x <- fpmpi_example
3 > plot(x)

```

## 6.2 Visualizing mpiP Profiler Output

An example parsed mpiP dataset is included in the **pbdPROF** package, called `mpip_example`. It contains the profiler output of the mpiP library example `11-p2p-mess-size.exe`, located in the testing subtree of the library source. The example was run with 4 processors, and the parsed profiler output is as follows:

```

An mpip profiler object:
[[1]]
  Task AppTime MPITime  MPI.
1     0  0.0192  0.00753 39.28
2     1  0.0195  0.00740 37.98
3     2  0.0194  0.00765 39.35
4     3  0.0194  0.00368 18.95
5     *  0.0775  0.02630 33.88

[[2]]
  ID Lev File.Address Line_Parent_Funct MPI_Call
1   1  0   4225651      [unknown]      Recv
2   2  0   4226678      [unknown]      Recv
3   3  0   4225914      [unknown]      Recv
4   4  0   4226382      [unknown]      Recv
5   5  0   4226540      [unknown]      Barrier
6   6  0   4226080      [unknown]      Irecv
7   7  0   4225924      [unknown]      Barrier
8   8  0   4226816      [unknown]      Recv
9   9  0   4226530      [unknown]      Irecv
10  10 0   4225661      [unknown]      Barrier
11  11 0   4226236      [unknown]      Recv
12  12 0   4226090      [unknown]      Barrier
13  13 0   4225988      [unknown]      Barrier
14  14 0   4225807      [unknown]      Ibsend
15  15 0   4225526      [unknown]      Buffer_attach
16  16 0   4225762      [unknown]      Buffer_attach
17  17 0   4226631      [unknown]      Send
18  18 0   4226446      [unknown]      Barrier
19  19 0   4226335      [unknown]      Issend
20  20 0   4225836      [unknown]      Wait
21  21 0   4226033      [unknown]      Irsend
22  22 0   4226769      [unknown]      Ssend
23  23 0   4225563      [unknown]      Bsend
24  24 0   4225817      [unknown]      Barrier
25  25 0   4226483      [unknown]      Rsend
26  26 0   4226189      [unknown]      Isend
27  27 0   4225855      [unknown]      Buffer_detach
28  28 0   4225592      [unknown]      Buffer_detach
29  29 0   4225573      [unknown]      Barrier

[[3]]
  Call Site Time App. MPI. COV

```

1	Barrier	10	6.930	8.94	26.37	1.41
2	Barrier	24	6.420	8.28	24.45	0.85
3	Barrier	7	5.140	6.63	19.56	1.41
4	Recv	1	2.440	3.15	9.29	0.97
5	Buffer_attach	15	2.250	2.91	8.59	0.99
6	Barrier	29	1.730	2.23	6.57	1.37
7	Barrier	12	0.205	0.26	0.78	0.12
8	Barrier	18	0.191	0.25	0.73	0.01
9	Recv	2	0.128	0.17	0.49	0.29
10	Recv	3	0.114	0.15	0.43	1.14
11	Wait	20	0.090	0.12	0.34	0.00
12	Bsend	23	0.084	0.11	0.32	0.71
13	Barrier	5	0.071	0.09	0.27	1.25
14	Recv	11	0.065	0.08	0.25	0.72
15	Ssend	22	0.062	0.08	0.24	0.64
16	Buffer_detach	28	0.054	0.07	0.21	0.84
17	Rsend	25	0.053	0.07	0.20	0.45
18	Irecv	6	0.047	0.06	0.18	0.75
19	Ibsend	14	0.038	0.05	0.14	0.22
20	Recv	8	0.033	0.04	0.13	0.04

[[4]]

	Call	Site	Count	Total	Avrg	Sent.
1	Ssend	22	2	32800	16400	22.22
2	Send	17	2	28700	14300	19.44
3	Rsend	25	2	24600	12300	16.67
4	Issend	19	2	20500	10200	13.89
5	Isend	26	2	16400	8190	11.11
6	Irsend	21	2	12300	6140	8.33
7	Ibsend	14	2	8190	4100	5.56
8	Bsend	23	2	4100	2050	2.78

[[5]]

	Name	Site	Rank	Count	Max	Mean	Min	App.	MPI.
1	Barrier	5	0	1	0.004	0.0040	0.004	0.02	0.05
2	Barrier	5	2	1	0.067	0.0670	0.067	0.34	0.88
3	Barrier	5	*	2	0.067	0.0355	0.004	0.09	0.27
4	Barrier	7	0	1	5.130	5.1300	5.130	26.77	68.15
5	Barrier	7	2	1	0.004	0.0040	0.004	0.02	0.05
6	Barrier	7	*	2	5.130	2.5700	0.004	6.63	19.56
7	Barrier	10	0	1	0.017	0.0170	0.017	0.09	0.23
8	Barrier	10	2	1	6.910	6.9100	6.910	35.53	90.30
9	Barrier	10	*	2	6.910	3.4600	0.017	8.94	26.37
10	Barrier	12	0	1	0.111	0.1110	0.111	0.58	1.47
11	Barrier	12	2	1	0.094	0.0940	0.094	0.48	1.23
12	Barrier	12	*	2	0.111	0.1020	0.094	0.26	0.78
13	Barrier	13	1	1	0.005	0.0050	0.005	0.03	0.07
14	Barrier	13	3	1	0.006	0.0060	0.006	0.03	0.16
15	Barrier	13	*	2	0.006	0.0055	0.005	0.01	0.04
16	Barrier	18	1	1	0.096	0.0960	0.096	0.49	1.30
17	Barrier	18	3	1	0.095	0.0950	0.095	0.49	2.58
18	Barrier	18	*	2	0.096	0.0955	0.095	0.25	0.73
19	Barrier	24	1	1	5.140	5.1400	5.140	26.38	69.45
20	Barrier	24	3	1	1.280	1.2800	1.280	6.60	34.82
21	Barrier	24	*	2	5.140	3.2100	1.280	8.28	24.45
22	Barrier	29	1	1	0.025	0.0250	0.025	0.13	0.34
23	Barrier	29	3	1	1.700	1.7000	1.700	8.76	46.25

24	Barrier	29	*	2	1.700	0.8630	0.025	2.23	6.57
25	Bsend	23	1	1	0.021	0.0210	0.021	0.11	0.28
26	Bsend	23	3	1	0.063	0.0630	0.063	0.32	1.71
27	Bsend	23	*	2	0.063	0.0420	0.021	0.11	0.32
28	Buffer_attach	15	1	1	1.920	1.9200	1.920	9.83	25.89
29	Buffer_attach	15	3	1	0.338	0.3380	0.338	1.74	9.19
30	Buffer_attach	15	*	2	1.920	1.1300	0.338	2.91	8.59
31	Buffer_attach	16	1	1	0.005	0.0050	0.005	0.03	0.07
32	Buffer_attach	16	3	1	0.005	0.0050	0.005	0.03	0.14
33	Buffer_attach	16	*	2	0.005	0.0050	0.005	0.01	0.04
34	Buffer_detach	27	1	1	0.002	0.0020	0.002	0.01	0.03
35	Buffer_detach	27	3	1	0.003	0.0030	0.003	0.02	0.08
36	Buffer_detach	27	*	2	0.003	0.0025	0.002	0.01	0.02
37	Buffer_detach	28	1	1	0.011	0.0110	0.011	0.06	0.15
38	Buffer_detach	28	3	1	0.043	0.0430	0.043	0.22	1.17
39	Buffer_detach	28	*	2	0.043	0.0270	0.011	0.07	0.21
40	Ibsend	14	1	1	0.016	0.0160	0.016	0.08	0.22
41	Ibsend	14	3	1	0.022	0.0220	0.022	0.11	0.60
42	Ibsend	14	*	2	0.022	0.0190	0.016	0.05	0.14
43	Irecv	6	0	1	0.011	0.0110	0.011	0.06	0.15
44	Irecv	6	2	1	0.036	0.0360	0.036	0.19	0.47
45	Irecv	6	*	2	0.036	0.0235	0.011	0.06	0.18
46	Irecv	9	0	1	0.003	0.0030	0.003	0.02	0.04
47	Irecv	9	2	1	0.002	0.0020	0.002	0.01	0.03
48	Irecv	9	*	2	0.003	0.0025	0.002	0.01	0.02
49	Irsend	21	1	1	0.010	0.0100	0.010	0.05	0.14
50	Irsend	21	3	1	0.009	0.0090	0.009	0.05	0.24
51	Irsend	21	*	2	0.010	0.0095	0.009	0.02	0.07
52	Isend	26	1	1	0.007	0.0070	0.007	0.04	0.09
53	Isend	26	3	1	0.007	0.0070	0.007	0.04	0.19
54	Isend	26	*	2	0.007	0.0070	0.007	0.02	0.05
55	Issend	19	1	1	0.008	0.0080	0.008	0.04	0.11
56	Issend	19	3	1	0.008	0.0080	0.008	0.04	0.22
57	Issend	19	*	2	0.008	0.0080	0.008	0.02	0.06
58	Recv	1	0	1	2.060	2.0600	2.060	10.74	27.33
59	Recv	1	2	1	0.380	0.3800	0.380	1.95	4.97
60	Recv	1	*	2	2.060	1.2200	0.380	3.15	9.29
61	Recv	2	0	1	0.051	0.0510	0.051	0.27	0.68
62	Recv	2	2	1	0.077	0.0770	0.077	0.40	1.01
63	Recv	2	*	2	0.077	0.0640	0.051	0.17	0.49
64	Recv	3	0	1	0.103	0.1030	0.103	0.54	1.37
65	Recv	3	2	1	0.011	0.0110	0.011	0.06	0.14
66	Recv	3	*	2	0.103	0.0570	0.011	0.15	0.43
67	Recv	4	0	1	0.008	0.0080	0.008	0.04	0.11
68	Recv	4	2	1	0.005	0.0050	0.005	0.03	0.07
69	Recv	4	*	2	0.008	0.0065	0.005	0.02	0.05
70	Recv	8	0	1	0.016	0.0160	0.016	0.08	0.21
71	Recv	8	2	1	0.017	0.0170	0.017	0.09	0.22
72	Recv	8	*	2	0.017	0.0165	0.016	0.04	0.13
73	Recv	11	0	1	0.016	0.0160	0.016	0.08	0.21
74	Recv	11	2	1	0.049	0.0490	0.049	0.25	0.64
75	Recv	11	*	2	0.049	0.0325	0.016	0.08	0.25
76	Rsend	25	1	1	0.035	0.0350	0.035	0.18	0.47
77	Rsend	25	3	1	0.018	0.0180	0.018	0.09	0.49
78	Rsend	25	*	2	0.035	0.0265	0.018	0.07	0.20
79	Send	17	1	1	0.014	0.0140	0.014	0.07	0.19
80	Send	17	3	1	0.017	0.0170	0.017	0.09	0.46

```

81      Send    17    *    2 0.017 0.0155 0.014  0.04  0.12
82      Ssend   22    1    1 0.045 0.0450 0.045  0.23  0.61
83      Ssend   22    3    1 0.017 0.0170 0.017  0.09  0.46
84      Ssend   22    *    2 0.045 0.0310 0.017  0.08  0.24
85      Wait    20    1    1 0.045 0.0450 0.045  0.23  0.61
86      Wait    20    3    1 0.045 0.0450 0.045  0.23  1.22
87      Wait    20    *    2 0.045 0.0450 0.045  0.12  0.34

```

```
[[6]]
```

	Name	Site	Rank	Count	Max	Mean	Min	Sum
1	Bsend	23	1	1	2048	2048	2048	2048
2	Bsend	23	3	1	2048	2048	2048	2048
3	Bsend	23	*	2	2048	2048	2048	4096
4	Ibsend	14	1	1	4096	4096	4096	4096
5	Ibsend	14	3	1	4096	4096	4096	4096
6	Ibsend	14	*	2	4096	4096	4096	8192
7	Irsend	21	1	1	6144	6144	6144	6144
8	Irsend	21	3	1	6144	6144	6144	6144
9	Irsend	21	*	2	6144	6144	6144	12290
10	Isend	26	1	1	8192	8192	8192	8192
11	Isend	26	3	1	8192	8192	8192	8192
12	Isend	26	*	2	8192	8192	8192	16380
13	Issend	19	1	1	10240	10240	10240	10240
14	Issend	19	3	1	10240	10240	10240	10240
15	Issend	19	*	2	10240	10240	10240	20480
16	Rsend	25	1	1	12290	12290	12290	12290
17	Rsend	25	3	1	12290	12290	12290	12290
18	Rsend	25	*	2	12290	12290	12290	24580
19	Send	17	1	1	14340	14340	14340	14340
20	Send	17	3	1	14340	14340	14340	14340
21	Send	17	*	2	14340	14340	14340	28670
22	Ssend	22	1	1	16380	16380	16380	16380
23	Ssend	22	3	1	16380	16380	16380	16380
24	Ssend	22	*	2	16380	16380	16380	32770

As with `fpmpi`, both `plot()` and `autoplot()` methods are available. For `mpiP`, there are several different sets of plots available.

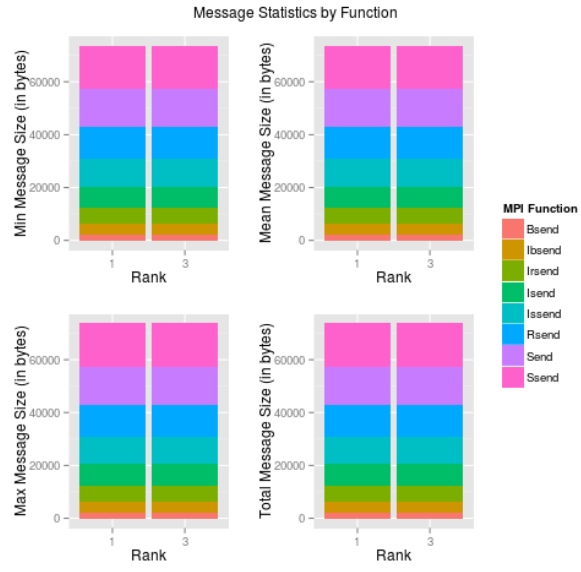
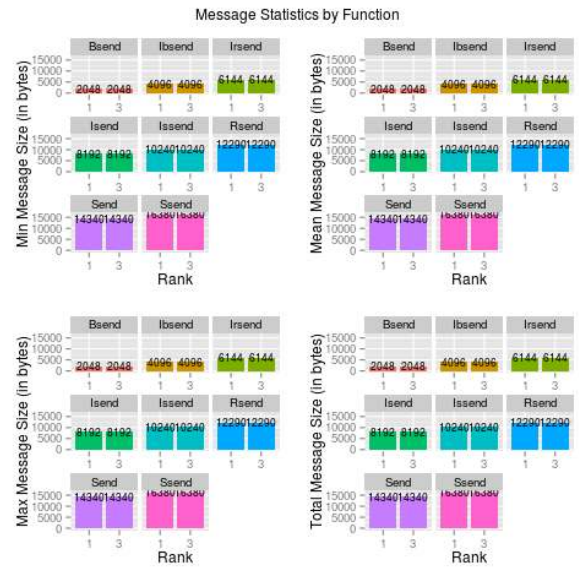
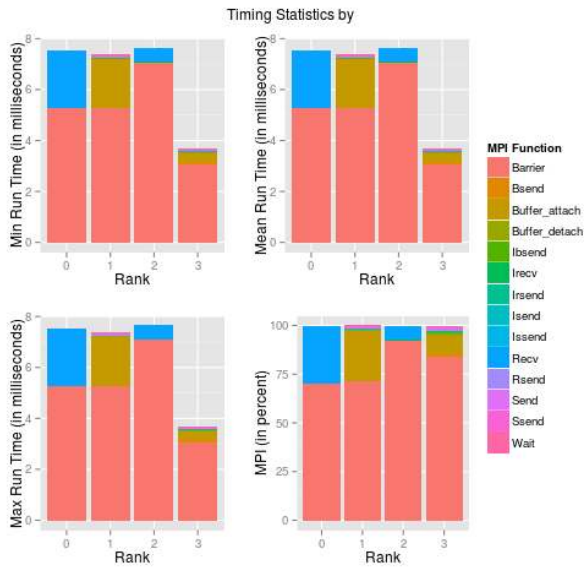
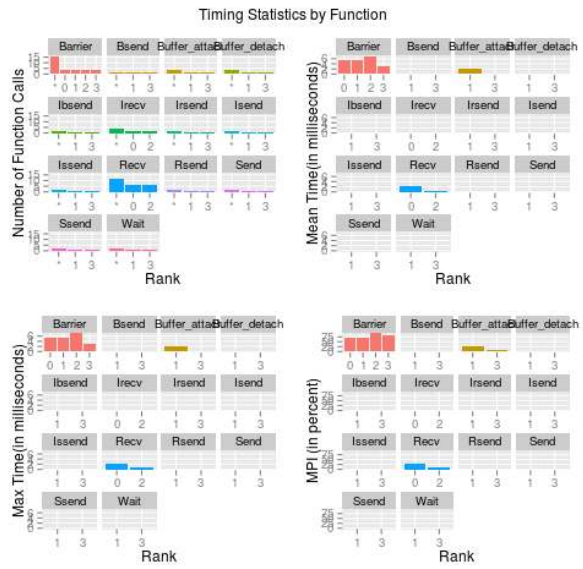
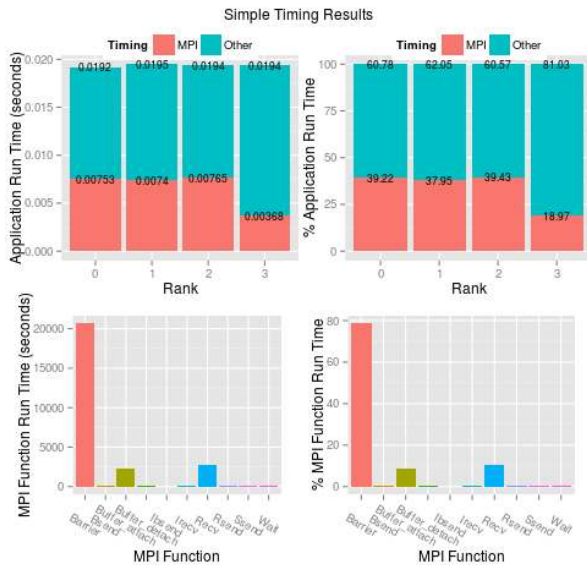
Figure 3 shows the 5 different sets of plots which can be produced via the following script.

```

1 > library(pbdPROF)
2 > x <- mpip_example
3 > plot(x, plot.type = "timing", bar.label = T)
4 > plot(x, plot.type = "stats1", bar.label = T)
5 > plot(x, plot.type = "stats2", bar.label = T)
6 > plot(x, plot.type = "messages1", bar.label = T)
7 > plot(x, plot.type = "messages2", bar.label = T)

```





## Part III

# Appendix

## A pbdPROF Troubleshooting

### A.1 Installation

**Problem 1:** If you have downloaded the package from github and tried to using R CMD INSTALL **pbdPROF** and you see an error similar to this

```
ERROR: 'configure' exists but is not executable -- see the 'R Installation and Administration Manual'
```

**Solution:** You have to make the configure executable which means giving it permission , which can done by

```
chmod +x configure
```

after changing the folder to package's main directory.

**Problem 2:** If you are using **fpmpi** (Gropp, 2000) externally and during it's installation you get an error similar to this

```
error :checking for library containing MPI_Init... (cached) no configure:
error: Could not find MPI library
```

**Solution:** You probably need to specify the path to MPI library using this in command line in the fpmpi main directory

```
./configure CPPFLAGS="-fPIC -I/usr/lib/openmpi/include"
LDFLAGS="-L/usr/lib/openmpi/lib -lmpi"
```

**Problem 3:** If you are using **mpiP** externally and during it's installation you get an error similar to this

```
libmpiP.a(wrappers.o): relocation R_X86_64_32 against '.rodata.str1.1' can not
be used when making a shared object; recompile with -fPIC
libmpiP.a: could not read symbols: Bad value collect2: error: ld returned 1
exit status
```

**Solution:** You probably need to specify the path to MPI library using this in command line when installing **mpiP**

```
./configure CPPFLAGS="-fPIC -I/usr/lib/openmpi/include"
LDFLAGS="-L/usr/lib/openmpi/lib -lmpi"
```

**Problem 4:** If you are using **mpiP** externally and during **pbdMPI** installation you get an error similar to this

```
Error : .onLoad failed in loadNamespace() for 'pbdMPI', details:
  call: dyn.load(file, DLLpath = DLLpath, ...)
  error: unable to load shared object 'pbdMPI.so':
  pbdMPI/libs/pbdMPI.so: undefined symbol: _Ux86_64_getcontext
```

**Solution:** You probably need to disable some external library prerequisite by **mpiP**, using this in command line when installing **mpiP**

R Script

```
./configure --disable-libunwind CPPFLAGS="-fPIC -I/usr/lib/openmpi/include"
  LDFLAGS="-L/usr/lib/openmpi/lib -lmpi"
```

## A.2 Running

**Problem 5:** No profiler output is produced.

**Solution:** If no profiler output is produced, then it is almost certainly the case that **pbdPROF** and/or the MPI-using R package (e.g., **pbdMPI**, **Rmpi**, etc.) was/were not set up and installed correctly. Please refer to [Section 2](#) and the relevant package's installation documentation and reinstall.

**Problem 6:** While running **Rmpi** code for profiling, if you encounter the error below:

```
error: mpiexec was unable to launch the specified application as it could not
  access
or execute an executable:
Executable: /path/to/R/package_installation_directory/2.15/Rmpi/Rslaves.sh
Node: "Your_node"
while attempting to start process rank 0.
```

**Solution:** You need to make executable of the shell scripts in the `inst/` directory of **Rmpi** main directory using the following command from command line in `inst/` directory:

R Script

```
chmod +x *.sh
```

**Problem 7:** While running **Rmpi** code for profiling, if you encounter the error below:

```
[G:12221] [[39704,0],0] ORTE_ERROR_LOG: Not found in file
  ../../../../../../orte/mca/plm/base/plm_base_launch_support.c at line 758
-----
mpiexec was unable to start the specified application as it encountered an
  error.
More information may be available above.
-----
```

## Solution:

1. You need to check whether your **Rmpi** is working without the **pbdPROF**. If yes try running your **Rmpi** code on single process only.
2. If above does not help, then you may need `.Rprofile` in `Rmpi/inst/` to run your code from `inst/` directory.
3. If still your code does not run, you need to update your OpenMPI version to the latest one. You can check your OpenMPI version <http://www.open-mpi.org/software/mpi/> through

```
mpi_info
```

4. If further you came to this far and luck is not with you somehow (pun intended), there might some configuration problem in your machine.

## B References

- Blackford LS, Choi J, Cleary A, D’Azevedo E, Demmel J, Dhillon I, Dongarra J, Hammarling S, Henry G, Petitet A, Stanley K, Walker D, Whaley RC (1997). *ScaLAPACK Users’ Guide*. Society for Industrial and Applied Mathematics, Philadelphia, PA. ISBN 0-89871-397-8 (paperback). URL [http://netlib.org/scalapack/slug/scalapack\\_slug.html/](http://netlib.org/scalapack/slug/scalapack_slug.html/).
- Chen W-C Schmidt D, Sehwat G, Patel P, Ostrouchov G (2013). “pbdPROF: Programming with Big Data – MPI Profiling Tools.” R Package, URL <http://cran.r-project.org/package=pbdPROF>.
- Chen WC, Ostrouchov G, Schmidt D, Patel P, Yu H (2012a). “pbdMPI: Programming with Big Data – Interface to MPI.” R Package, URL <http://cran.r-project.org/package=pbdMPI>.
- Chen WC, Ostrouchov G, Schmidt D, Patel P, Yu H (2012b). *A Quick Guide for the pbdMPI package*. R Vignette, URL <http://cran.r-project.org/package=pbdMPI>.
- Chen WC, Schmidt D, Ostrouchov G, Patel P (2012c). “pbDSLAP: Programming with Big Data – Scalable Linear Algebra Packages.” R Package, URL <http://cran.r-project.org/package=pbDSLAP>.
- Gropp W (2000). “FPMPI-2: Fast Profiling Library for MPI.” URL <http://www.mcs.anl.gov/research/projects/fpmi/WWW/>.
- Ostrouchov G, Chen WC, Schmidt D, Patel P (2012). “Programming with Big Data in R.” URL <http://r-pbd.org/>.
- Schmidt D, Chen WC, Ostrouchov G, Patel P (2012). “pbDBASE: Programming with Big Data – Core pbd Classes and Methods.” R Package, URL <http://cran.r-project.org/package=pbDBASE>.
- Shende SS, Malony AD (2006). “The Tau Parallel Performance System.” *Int. J. High Perform. Comput. Appl.*, **20**(2), 287–311. ISSN 1094-3420. doi:10.1177/1094342006064482. URL <http://dx.doi.org/10.1177/1094342006064482>.
- Vetter JS, McCracken MO (2001). “Statistical scalability analysis of communication operations in distributed applications.” In *Proceedings of the eighth ACM SIGPLAN symposium on Principles and practices of parallel programming*, PPOPP ’01, pp. 123–132. ACM, New York, NY, USA. ISBN 1-58113-346-4. doi:10.1145/379539.379590. URL <http://doi.acm.org/10.1145/379539.379590>.
- Yu H (2002). “Rmpi: Parallel Statistical Computing in R.” *R News*, **2**(2), 10–14. URL [http://cran.r-project.org/doc/Rnews/Rnews\\_2002-2.pdf](http://cran.r-project.org/doc/Rnews/Rnews_2002-2.pdf).