

**A Handbook of Statistical Analyses
Using R**

Brian S. Everitt and Torsten Hothorn



Survival Analysis: Glioma Treatment and Breast Cancer Survival

9.1 Introduction

9.2 Survival Analysis

9.3 Analysis Using R

9.3.1 Glioma Radioimmunotherapy

Figure 9.1 leads to the impression that patients treated with the novel radioimmunotherapy survive longer, regardless of the tumor type. In order to assess if this informal finding is reliable, we may perform a log-rank test via

```
R> survdiff(Surv(time, event) ~ group, data = g3)
```

Call:

```
survdiff(formula = Surv(time, event) ~ group, data = g3)
```

	N	Observed	Expected	(O-E) ² /E	(O-E) ² /V
group=Control	6	4	1.49	4.23	6.06
group=RIT	11	2	4.51	1.40	6.06

Chisq= 6.1 on 1 degrees of freedom, p= 0.0138

which indicates that the survival times are indeed different in both groups. However, the number of patients is rather limited and so it might be dangerous to rely on asymptotic tests. As shown in Chapter 3, conditioning on the data and computing the distribution of the test statistics without additional assumptions is one alternative. The function `surv_test` from package *coin* (Hothorn et al., 2006b,a) can be used to compute an exact conditional test answering the question whether the survival times differ for grade III patients:

```
R> library("coin")
R> surv_test(Surv(time, event) ~ group, data = g3,
+           distribution = "exact")
```

Exact Logrank Test

```
data: Surv(time, event) by group (Control, RIT)
Z = 2.1711, p-value = 0.02877
alternative hypothesis: two.sided
```

which, in this case, confirms the above results. The same exercise can be performed for patients with grade IV glioma

```

R> data("glioma", package = "coin")
R> library("survival")
R> layout(matrix(1:2, ncol = 2))
R> g3 <- subset(glioma, histology == "Grade3")
R> plot(survfit(Surv(time, event) ~ group, data = g3),
+       main = "Grade III Glioma", lty = c(2, 1),
+       ylab = "Probability", xlab = "Survival Time in Month",
+       legend.bty = "n", legend.text = c("Control", "Treated")
+     )
R> g4 <- subset(glioma, histology == "GBM")
R> plot(survfit(Surv(time, event) ~ group, data = g4),
+       main = "Grade IV Glioma", ylab = "Probability",
+       lty = c(2, 1), xlab = "Survival Time in Month",
+       xlim = c(0, max(glioma$time) * 1.05))

```

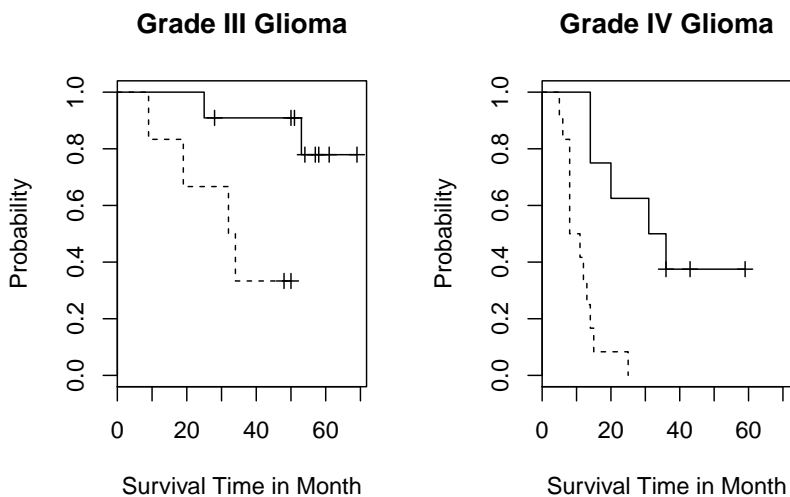


Figure 9.1 Survival times comparing treated and control patients.

```

R> surv_test(Surv(time, event) ~ group, data = g4,
+           distribution = "exact")

```

Exact Logrank Test

```

data: Surv(time, event) by group (Control, RIT)
Z = 3.2215, p-value = 0.0001588
alternative hypothesis: two.sided

```

which shows a difference as well. However, it might be more appropriate to answer the question whether the novel therapy is superior for both groups of

tumors simultaneously. This can be implemented by *stratifying*, or *blocking*, with respect tumor grading:

```
R> surv_test(Surv(time, event) ~ group | histology, data = glioma,
+           distribution = approximate(B = 10000))
```

Approximative Logrank Test

```
data: Surv(time, event) by
      group (Control, RIT)
      stratified by histology
Z = 3.6704, p-value = 1e-04
alternative hypothesis: two.sided
```

Here, we need to approximate the exact conditional distribution since the exact distribution is hard to compute. The result supports the initial impression implied by Figure 9.1

9.3.2 Breast Cancer Survival

Before fitting a Cox model to the GBSG2 data, we again derive a Kaplan-Meier estimate of the survival function of the data, here stratified with respect to whether a patient received a hormonal therapy or not (see Figure 9.2).

Fitting a Cox model follows roughly the same rules are shown for linear models in Chapters 4, 5 or 6 with the exception that the response variable is again coded as a *Surv* object. For the GBSG2 data, the model is fitted via

```
R> GBSG2_coxph <- coxph(Surv(time, cens) ~ ., data = GBSG2)
```

and the results as given by the `summary` method are given in Figure 9.3. Since we are especially interested in the relative risk for patients who underwent a hormonal therapy, we can compute an estimate of the relative risk and a corresponding confidence interval via

```
R> ci <- confint(GBSG2_coxph)
R> exp(cbind(coef(GBSG2_coxph), ci))["horThyes",]
```

```
          2.5 %      97.5 %
0.7073155 0.5492178 0.9109233
```

This result implies that patients treated with a hormonal therapy had a lower risk and thus survived longer compared to women who were not treated this way.

Model checking and model selection for proportional hazards models are complicated by the fact that easy to use residuals, such as those discussed in Chapter 5 for linear regression model are not available, but several possibilities do exist. A check of the proportional hazards assumption can be done by looking at the parameter estimates β_1, \dots, β_q over time. We can safely assume proportional hazards when the estimates don't vary much over time. The null hypothesis of constant regression coefficients can be tested, both globally as well as for each covariate, by using the `cox.zph` function

```
R> GBSG2_zph <- cox.zph(GBSG2_coxph)
R> GBSG2_zph
```

```
R> data("GBSG2", package = "TH.data")
R> plot(survfit(Surv(time, cens) ~ horTh, data = GBSG2),
+       lty = 1:2, mark.time = FALSE, ylab = "Probability",
+       xlab = "Survival Time in Days")
R> legend(250, 0.2, legend = c("yes", "no"), lty = c(2, 1),
+       title = "Hormonal Therapy", bty = "n")
```

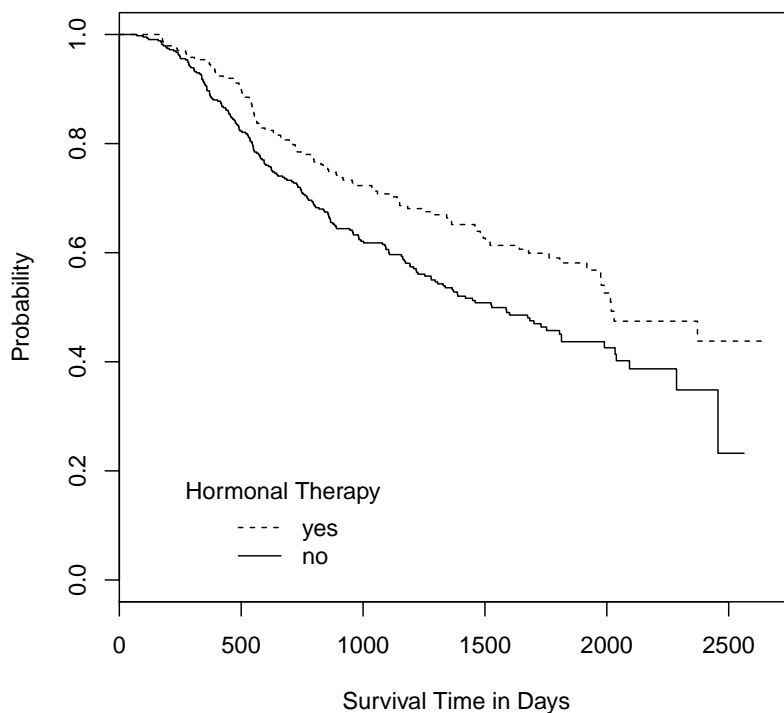


Figure 9.2 Kaplan-Meier estimates for breast cancer patients who either received a hormonal therapy or not.

	<i>rho</i>	<i>chisq</i>	<i>p</i>
<i>horThyes</i>	-2.54e-02	1.96e-01	0.65778
<i>age</i>	9.40e-02	2.96e+00	0.08552
<i>menostatPost</i>	-1.19e-05	3.75e-08	0.99985
<i>tsize</i>	-2.50e-02	1.88e-01	0.66436
<i>tgrade.L</i>	-1.30e-01	4.85e+00	0.02772
<i>tgrade.Q</i>	3.22e-03	3.14e-03	0.95530
<i>pnodes</i>	5.84e-02	5.98e-01	0.43941

```
R> summary(GBSG2_coxph)
```

```
Call:
coxph(formula = Surv(time, cens) ~ ., data = GBSG2)

n = 686, number of events = 299

      coef exp(coef) se(coef)      z Pr(>|z|)
horThyes -0.3462784  0.7073155  0.1290747 -2.683 0.007301
age       -0.0094592  0.9905854  0.0093006 -1.017 0.309126
menostatPost 0.2584448  1.2949147  0.1834765  1.409 0.158954
tsize     0.0077961  1.0078266  0.0039390  1.979 0.047794
tgrade.L  0.5512988  1.7355056  0.1898441  2.904 0.003685
tgrade.Q -0.2010905  0.8178384  0.1219654 -1.649 0.099199
pnodes    0.0487886  1.0499984  0.0074471  6.551 5.7e-11
progrec   -0.0022172  0.9977852  0.0005735 -3.866 0.000111
estrec    0.0001973  1.0001973  0.0004504  0.438 0.661307

horThyes **
age
menostatPost
tsize *
tgrade.L **
tgrade.Q .
pnodes ***
progrec ***
estrec
---
Signif. codes:  0 '***' 0.001 '**' 0.01 '*' 0.05 '.' 0.1 ' ' 1

      exp(coef) exp(-coef) lower .95 upper .95
horThyes  0.7073  1.4138  0.5492  0.9109
age       0.9906  1.0095  0.9727  1.0088
menostatPost 1.2949  0.7723  0.9038  1.8553
tsize     1.0078  0.9922  1.0001  1.0156
tgrade.L  1.7355  0.5762  1.1963  2.5178
tgrade.Q  0.8178  1.2227  0.6439  1.0387
pnodes    1.0500  0.9524  1.0348  1.0654
progrec   0.9978  1.0022  0.9967  0.9989
estrec    1.0002  0.9998  0.9993  1.0011

Concordance = 0.692 (se = 0.018 )
Rsquare = 0.142 (max possible = 0.995 )
Likelihood ratio test = 104.8 on 9 df, p=0
Wald test = 114.8 on 9 df, p=0
Score (logrank) test = 120.7 on 9 df, p=0
```

Figure 9.3 R output of the `summary` method for `GBSG2_coxph`.

```
progrec      5.65e-02 1.20e+00 0.27351
estrec      5.46e-02 1.03e+00 0.30967
GLOBAL      NA 2.27e+01 0.00695
```

There seems to be some evidence of time-varying effects, especially for age and tumor grading. A graphical representation of the estimated regression coefficient over time is shown in Figure 9.4. We refer to [Therneau and Grambsch \(2000\)](#) for a detailed theoretical description of these topics.

The tree-structured regression models applied to continuous and binary responses in Chapter 8 are applicable to censored responses in survival analysis as well. Such a simple prognostic model with only a few terminal nodes might

```
R> plot(GBSG2_zph, var = "age")
```

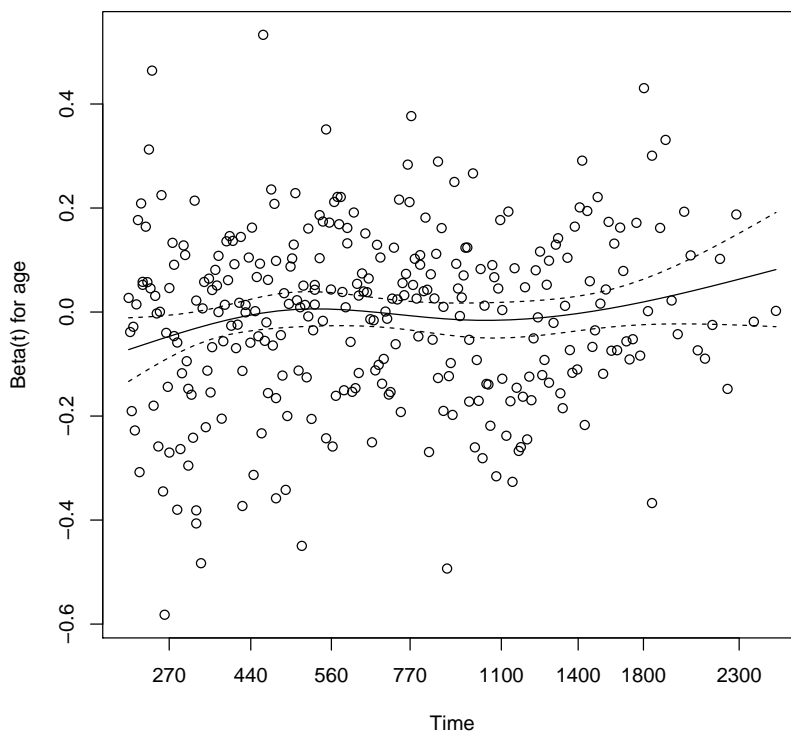


Figure 9.4 Estimated regression coefficient for `age` depending on time for the GBSG2 data.

be helpful for relating the risk to certain subgroups of patients. Both `rpart` and the `ctree` function from package *party* can be applied to the GBSG2 data, where the conditional trees of the latter selects cutpoints based on log-rank statistics;

```
R> GBSG2_ctree <- ctree(Surv(time, cens) ~ ., data = GBSG2)
```

and the `plot` method applied to this tree produces the graphical representation in Figure 9.6. The number of positive lymph nodes (`pnodes`) is the most important variable in the tree, this corresponds to the p -value associated with this variable in Cox's regression, see Figure 9.3. Women with not more than three positive lymph nodes who have undergone a hormonal therapy seem to have the best prognosis whereas a large number of positive lymph nodes and a small value of the progesterone receptor indicates a bad prognosis.


```
R> layout(matrix(1:3, ncol = 3))
R> res <- residuals(GBSG2_coxph)
R> plot(res ~ age, data = GBSG2, ylim = c(-2.5, 1.5),
+       pch = ".", ylab = "Martingale Residuals")
R> abline(h = 0, lty = 3)
R> plot(res ~ pnodes, data = GBSG2, ylim = c(-2.5, 1.5),
+       pch = ".", ylab = "")
R> abline(h = 0, lty = 3)
R> plot(res ~ log(progrec), data = GBSG2, ylim = c(-2.5, 1.5),
+       pch = ".", ylab = "")
R> abline(h = 0, lty = 3)
```

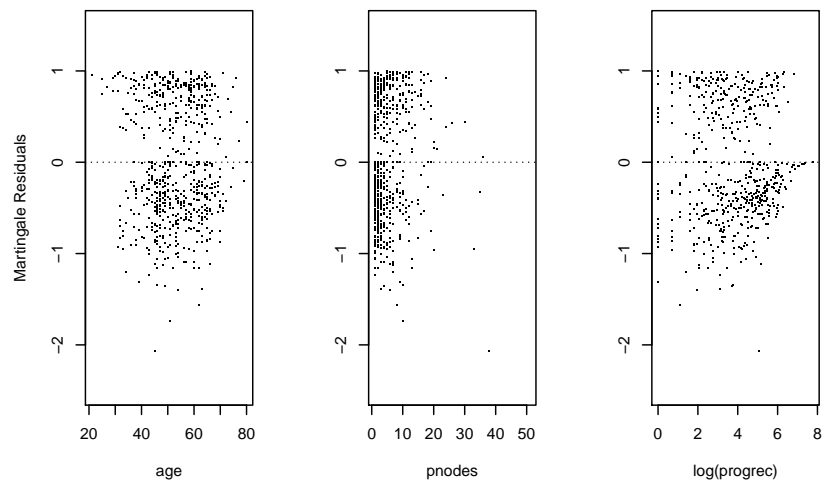


Figure 9.5 Martingale residuals for the GBSG2 data.

```
R> plot(GBSG2_ctree)
```

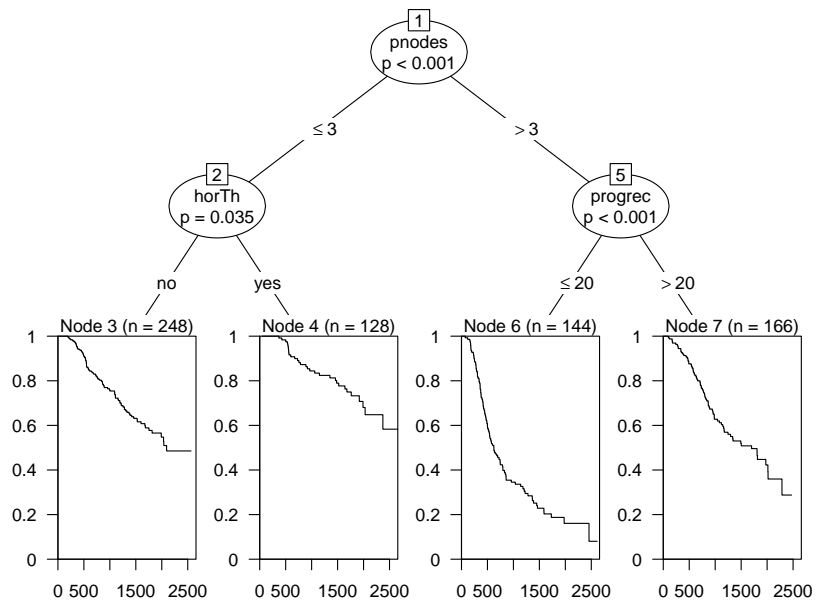


Figure 9.6 GBSG2 data: Conditional inference tree with the survival function, estimated by Kaplan-Meier, shown for every subgroup of patients identified by the tree.

Bibliography

- Hothorn, T., Hornik, K., van de Wiel, M., and Zeileis, A. (2006a), *coin: Conditional Inference Procedures in a Permutation Test Framework*, URL <http://CRAN.R-project.org>, R package version 0.6-6.
- Hothorn, T., Hornik, K., van de Wiel, M. A., and Zeileis, A. (2006b), “A Lego system for conditional inference,” *The American Statistician*, 60, 257–263, URL <http://statmath.wu-wien.ac.at/~zeileis/papers/Hothorn+Hornik+VanDeWiel-2006.pdf>.
- Therneau, T. M. and Grambsch, P. M. (2000), *Modeling Survival Data: Extending the Cox Model*, New York, USA: Springer.