

# Import and Export of Spectra Files

Vignette for the R package *hyperSpec*

Claudia Beleites <[chemometrie@beleites.de](mailto:chemometrie@beleites.de)>

DIA Raman Spectroscopy Group, University of Trieste/Italy

Spectroscopy · Imaging, IPHT, Jena/Germany

November 18, 2016

## Supported File Formats

*hyperSpec* supports a number of file formats relevant for different types of spectroscopy. This is naturally only a subset of the file formats produced by different spectroscopic equipment.

If you use *hyperSpec* with data formats not mentioned in this document, please send an email to [Claudia Beleites <chemometrie@beleites.de>](mailto:chemometrie@beleites.de), so that this document can be updated.

The information should include

- The type of spectroscopy
- Spectrometer model, manufacturer, and software
- The “native” file format (including a sample file)
- Description of relevant procedures to convert the file
- R code to import the data together with an example file that can actually be read by R.
- Documentation, particularly the description of the data format

If you need help finding out how to import your data, please search and eventually ask on [Stack-exchange](#) with tags [r] and [spectroscopy]. While I regularly check these tags, consider dropping me an email in addition.

## Reproducing the Examples in this Vignette

The source code of this vignette including the spectra files are available as .zip file at *hyperSpec*'s home page: <http://hyperspec.r-forge.r-project.org/blob/fileio.zip>

Note that some definitions are in file `vignettes.defs`.

## Contents

### 1. Introduction

2

<b>2. Creating a <i>hyperSpec</i> object with <code>new</code></b>	<b>3</b>
2.1. Creating a <i>hyperSpec</i> Object from a Data Matrix (Spectra Matrix)	3
2.2. Creating a <i>hyperSpec</i> Object from a Data Cube (Spectra Array)	3
<b>3. Reading Multiple files into one <i>hyperSpec</i> object</b>	<b>4</b>
<b>4. ASCII files</b>	<b>5</b>
4.1. ASCII files with samples in columns	5
4.2. JCAMP-DX	6
4.3. Basic Atomic Spectra from NIST Tables	7
4.4. Further ASCII Formats	8
4.5. ASCII Export	8
<b>5. Binary file formats</b>	<b>8</b>
5.1. Matlab Files	8
5.1.1. Matlab Export	9
5.1.2. Import of Matlab files written by Cytospec	9
5.2. ENVI Files	10
5.2.1. ENVI Export	10
5.3. spc Files	10
<b>6. Manufacturer-Specific Discussion of File Import</b>	<b>14</b>
6.1. Manufacturer Specific Import Functions	14
6.2. Bruker FT-IR Imaging	14
6.3. Nicolet FT-IR Imaging	14
6.4. Varian/Agilent FT-IR Imaging	14
6.5. Kaiser Optical Systems Raman	15
6.5.1. Kaiser Optical Systems ASCII Files	15
6.5.2. Kaiser Optical Systems Raman Maps	15
6.6. Renishaw Raman	16
6.6.1. Renishaw ASCII data	16
6.7. Horiba / Jobin Yvon (e.g. LabRAM)	17
6.8. Andor Solis	17
6.9. Witec	18
<b>7. Writing your own Import Function</b>	<b>19</b>
7.1. A new ASCII Import Function: <code>scan.txt.PerkinElmer</code>	19
7.2. Deriving a More Specific Function: <code>read.ENVI.Nicolet</code>	21
7.3. Deriving import filters for spc files	22
<b>A. File Import Functions by Format</b>	<b>24</b>
<b>B. File Import Functions by Manufacturer</b>	<b>25</b>
<b>C. File Import Functions by Spectroscopy</b>	<b>26</b>
<b>D. Unit Test Results</b>	<b>26</b>
<b>1. Introduction</b>	

This document describes how spectra can be imported into *hyperSpec* objects. Some possibilities to export *hyperSpec* objects as files are mentioned, too.

The most basic function to create *hyperSpec* objects is `new ("hyperSpec")` (section 2). It makes a *hyperSpec* object from data already in R's workspace. Thus, once the spectra are imported into R, conversion to *hyperSpec* objects is straightforward.

In addition, *hyperSpec* comes with predefined import functions for different data formats. This document divides the discussion into dealing with ASCII files (section 4, p. 5) and binary file formats (section 5, p. 8). If data export for the respective format is possible, it is discussed in the same sections. As sometimes the actual data written by the spectrometer software exhibits peculiarities, *hyperSpec* offers several specialized import functions. These are in general named after the data format followed by the manufacturer (e.g. `read.ENVI.Nicolet`).

Overview lists of the directly supported file formats are in the appendix: sorted by file format (appendix A, p. 24), manufacturer (appendix B, p. 25), and by spectroscopy (appendix C, p. 26).

## 2. Creating a hyperSpec object with new

To create a *hyperSpec* object from data in R's workspace, use:

```
> spc <- new ("hyperSpec", spc, wavelength, data, labels)
```

With the arguments:

`spc` the spectra matrix (may also be given as matrix inside column `$spc` of `data`)

`wavelength` the wavelength axis vector

`data` the extra data (possibly already including the spectra matrix in column `spc`)

`labels` a list with the proper labels. Do not forget the wavelength axis label in `$.wavelength` and the spectral intensity axis label in `$spc`.

Thus, once your data is in R's workspace, creating a *hyperSpec* object is easy. I suggest wrapping the code to import your data and the line joining it into a *hyperSpec* object by your own import function. You are more than welcome to contribute such import code to *hyperSpec*. Section 7, (p. 19) discusses examples of custom import functions.

### 2.1. Creating a hyperSpec Object from a Data Matrix (Spectra Matrix)

As spectra matrices are the internal format of *hyperSpec*, the constructor can directly be used:

```
> spc <- new ("hyperSpec", spc, wavelength, data, labels)
```

### 2.2. Creating a hyperSpec Object from a Data Cube (Spectra Array)

Roberto Moschetti asked how to convert a hyperspectral data cube into a *hyperSpec* object:

*The problem is that I have a hypercube with the following dimensions:  $67 \times 41 \times 256$   $y = 67$*

*$x = 41$*

*$wavelengths = 256$*

*I do not know the way to import the hypercube.*

Data cubes (i.e. 3-dimensional arrays of spectral data) result from spectral imaging measurements, where spectra are supplied for each pixel of an  $px.x \times px.y$  imaging area. They have 3 directions, usually  $x$ ,  $y$ , and the spectral dimension.

The solution is to convert the array into a spectra matrix and have separate  $x$  and  $y$  coordinates.

Assume `data` is the data cube, and `x`, `y` and `wl` hold vectors with the proper  $x$  and  $y$  coordinates and the wavelengths:

```

> data <- array (1 : 24, 4 : 2)
> wl <- c (550, 630)
> x <- c (1000, 1200, 1400)
> y <- c (1800, 1600, 1400, 1200)
> data
, , 1
      [,1] [,2] [,3]
[1,]    1    5    9
[2,]    2    6   10
[3,]    3    7   11
[4,]    4    8   12
, , 2
      [,1] [,2] [,3]
[1,]   13   17   21
[2,]   14   18   22
[3,]   15   19   23
[4,]   16   20   24

```

Such data can be converted into a *hyperSpec* object by:

```

> d <- dim (data)
> dim (data) <- c (d [1] * d [2], d [3])
> x <- rep (x, each = d [1])
> y <- rep (y, d [2])
> spectra <- new ("hyperSpec", spc = data,
+   data = data.frame (x, y), wavelength = wl)

```

If no proper coordinates (vectors *x*, *y* and *wl*) are available, they can be left out. In the case of *x* and *y*, map plotting will then be impossible, missing *wavelengths* will be replaced by column indices counting from 1 to *d [3]* automatically. Of course, such sequences (the row/column/pixel numbers) can be used instead of the original *x* and *y* as well:

```

> y <- seq_len (d [1])
> x <- seq_len (d [2])

```

Data cubes often come from spectral imaging systems that use an “image” coordinate system counting *y* from top to bottom. Note that this should be accounted for in the decreasing order of the original *y* vector.

### 3. Reading Multiple files into one *hyperSpec* object

Many of the functions described below will work on one file, even though derived functions such as `read.spc.KaiserMap` (see section 6.5.2, p. 15) may take care of measurements consisting of multiple files.

Usually, the most convenient way to import multiple files into one *hyperSpec* object is reading all files into a list of *hyperSpec* objects, and then collapsing this list into a single *hyperSpec* object:

```

> files <- Sys.glob ("spc.Kaisermap/*.spc")
> files <- files [seq (1, length (files), by = 2)] # import low wavenumber region only
> spc <- lapply (files, read.spc)
> length (spc)

[1] 54

> spc [[1]]

```

```

hyperSpec object
  1 spectra
  4 data columns
  1340 data points / spectrum
wavelength: x/"a. u." [numeric] 1 2 ... 1340
data: (1 rows x 4 columns)
  1. z: x/"a. u." [numeric] 1
  2. z.end: x/"a. u." [numeric] 1
  3. spc: Counts [matrix1340] 2782.7 2229.8 ... 932.02
  4. filename: filename [character] spc.Kaisermap/ebroAVII.spc

> spc <- collapse (spc)
> spc

hyperSpec object
  54 spectra
  4 data columns
  1340 data points / spectrum
wavelength: x/"a. u." [numeric] 1 2 ... 1340
data: (54 rows x 4 columns)
  1. z: x/"a. u." [numeric] 1 1 ... 1
  2. z.end: x/"a. u." [numeric] 1 1 ... 1
  3. spc: Counts [matrix1340] 2782.7 2678.6 ... 789.49
  4. filename: filename [character] spc.Kaisermap/ebroAVII.spc spc.Kaisermap/ebroAVIK.spc ... spc.Kaisermap/ebroAVXB.spc

```

Note that in this particular case, the spectra are more efficiently read by `read.spc.KaiserMap` (see section 6.5.2, p. 15).

If you regularly import huge maps or images, writing a customized import function is highly encouraged. You may gain speed and memory by using the internal workhorse functions for the file import. In that case, please contact the package maintainer ([Claudia Beleites <chemome-trie@beleites.de>](mailto:claudia.beleites@chemome-trie.beleites.de)) for advise (contributions to *hyperSpec* are welcome and all authors are listed appropriately in the function help page's author section).

## 4. ASCII files

Currently, *hyperSpec* provides two functions for general ASCII data import:

`read.txt.long` imports long format ASCII files, i. e. one intensity value per row

`read.txt.wide` imports wide format ASCII files, i. e. one spectrum per row

The import functions immediately return a *hyperSpec* object.

Internally, they use `read.table`, a very powerful ASCII import function. R supplies another ASCII import function, `scan`. `scan` imports numeric data matrices and is faster than `read.table`, but cannot import column names. If your data does not contain a header or it is not important and can safely be skipped, you may want to import your data using `scan`.

Note that R allows to use a variety of compressed file formats directly as ASCII files (for example, see section 6.6.1 on p. 16). Also, both `read.txt.long` and `read.txt.wide` accept connections instead of file names.

### 4.1. ASCII files with samples in columns

Richard Pena asked about importing another ASCII file type:

*Triazine5\_31.txt* file corresponds to X ray powder diffraction data (Bruker AXS). The native files data “.raw” are read with EVA software then they are converted into .uxd file with the File Exchange software (Bruker AXS). The .uxd file are opened with Excel software and saved as .txt file, csv file (ChemoSpec) or xls.

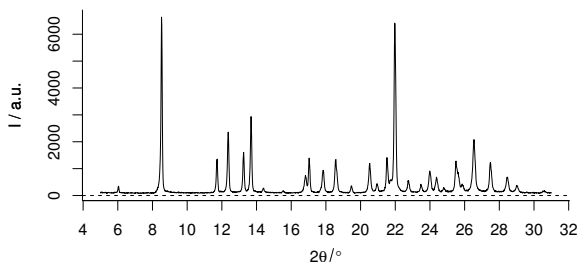
The first and following columns corresponds to the angle diffraction and the intensity values of samples respectively.

This file thus differs from the ASCII formats discussed above in that the samples are actually in columns whereas *hyperSpec* expects them to be in rows. The header line gives the name of the sample. Import is straightforward, just the spectra matrix needs to be transposed to make a *hyperSpec* object:

```
> file <- read.table("txt.t/Triazine 5_31.txt", header = TRUE, dec = ",", sep = "\t")
> triazine <- new("hyperSpec", wavelength = file [,1], spc = t(file [, -1]),
+               data = data.frame(sample = colnames(file [, -1])),
+               labels = list(.wavelength = expression(2 * theta / degree),
+                             spc = "I / a.u."))
> triazine
```

```
hyperSpec object
 25 spectra
 2 data columns
1759 data points / spectrum
wavelength: 2 * theta/degree [numeric] 5.0025 5.0173 ... 31.004
data: (25 rows x 2 columns)
 1. sample: [factor] DIV1208200 DIV1208300 ... VCA0106703
 2. spc: I / a.u. [matrix1759] 92 96 ... 163
```

```
> plot(triazine [1])
```



Witec also saves ASCII data with spectra in columns (Export → Table), see 6.9.

## 4.2. JCAMP-DX

Limited import of JCAMP-DX files v. 4.24 [1] is available in function `read.jdx`. These files can contain multiple spectra, supported data formats are tabular XY, .XY and X++(Y..Y).

```
> read.jdx("jcamp-dx/shimadzu.jdx", encoding = "latin1", keys.hdr2data=TRUE)
```

```
hyperSpec object
 0 spectra
11 data columns
3401 data points / spectrum
wavelength: [numeric] 60.05 61.05 ... 548.3
data: (0 rows x 11 columns)
 1. spc: [matrix3401]
 2. file: [factor]
 3. title: [numeric]
 4. mw: [numeric]
```

```

5. molform: [factor]
6. casregistryno: [factor]
7. datatype: [factor]
8. sampledescription: [factor]
9. casname: [factor]
10. $retentionindex: [numeric]
11. .format: [factor]

> read.jdx ("jcamp-dx/virgilio.jdx")

hyperSpec object
  1 spectra
  2 data columns
  1216 data points / spectrum
wavelength: tilde(nu)/cm^-1 [numeric] 3030 3028 ... 600
data: (1 rows x 2 columns)
  1. spc: A [matrix1216] -3.1244e-05 0.0000e+00 ... 0
  2. filename: filename [character] jcamp-dx/virgilio.jdx

```

The last file has a slight inconsistency between its meta data and spectroscopic data, causing a message. However, the difference is minute compared to the intensities. If this is known in advance, an appropriate tolerance can be chosen:

```

> read.jdx ("jcamp-dx/virgilio.jdx", ytol = 1e-9)

hyperSpec object
  1 spectra
  2 data columns
  1216 data points / spectrum
wavelength: tilde(nu)/cm^-1 [numeric] 3030 3028 ... 600
data: (1 rows x 2 columns)
  1. spc: A [matrix1216] -3.1244e-05 0.0000e+00 ... 0
  2. filename: filename [character] jcamp-dx/virgilio.jdx

```

#### Note

read.jdx.Shimadzu is deprecated.

#### Note

An R package dedicated to importing JCAMP-DX is currently under development by Bryan Hanson (<https://github.com/bryanhanson/readJDX>). *hyperSpec* will use that package once it is available on CRAN. Maintenance of *hyperSpec*'s read.jdx function is limited from now on in favor of Bryan's package.

### 4.3. Basic Atomic Spectra from NIST Tables

The NIST (National Institute of Standards and Technology) has published a data base of basic atomic emission spectra (see <http://physics.nist.gov/PhysRefData/Handbook/periodictable.htm>) with emission lines tabulated in ASCII (HTML) files.

Here's an example how to extract the data of the Hg strong lines file:

```

> file <- readLines("NIST/mercurytable2.htm")
> #file <- readLines("http://physics.nist.gov/PhysRefData/Handbook/Tables/mercurytable2.htm")
>
> file <- file [- (1 : grep ("Intensity.*Wavelength", file) - 1)]
> file <- file [1 : (grep("</pre>", file) [1] - 1)]
> file <- gsub ("<[^>]*>", "", file)
> file <- file [! grepl ("^[[:space:]]+$", file)]

```

```

> colnames <- file [1]
> colnames <- gsub ("[:space:][:space:]", "\t", file [1])
> colnames <- strsplit (colnames, "\t")[[1]]
> if (! all (colnames == c ("Intensity", "Wavelength (&Aring;)", "Spectrum", "Ref. ")))
+ stop ("file format changed!")
> tablestart <- grep ("^[:blank:]*[:alpha:]+$", file) + 1
> tableend <- c (tablestart [-1] - 2, length (file))
> tables <- list ()
> for (t in seq_along (tablestart)){
+ tmp <- file [tablestart [t] : tableend [t]]
+ tables [[t]] <- read.fwf (textConnection (tmp), c (5, 8, 12, 15, 9))
+ colnames (tables [[t]]) <- c ("Intensity", "persistent", "Wavelength", "Spectrum", "Ref. ")
+ tables [[t]]$type <- gsub ("[:space:]", "", file [tablestart [t] - 1])
+ }
> tables <- do.call (rbind, tables)
> levels (tables$Spectrum) <- gsub (" ", "", levels (tables$Spectrum))
> Hg.AES <- list ()
> for (s in levels (tables$Spectrum))
+ Hg.AES [[s]] <- new ("hyperSpec", wavelength = tables$Wavelength [tables$Spectrum == s],
+ spc = tables$Intensity [tables$Spectrum == s],
+ data = data.frame (Spectrum = s),
+ label = list (.wavelength = expression (lambda / ring (A)),
+ spc = "I"))
> plot (collapse (Hg.AES), lines.args = list (type = "h"), col = 1 : 2)

```

#### 4.4. Further ASCII Formats

Further import filters are provided for manufacturer/software specific ASCII formats, see table A (p. 24) and section 6.1 (p. 14).

#### 4.5. ASCII Export

ASCII export can be done in wide and long format using `write.txt.long` and `write.txt.wide`. If you need a specific header or footer, use R's functions for writing files: `write.table`, `write`, `cat` and so on offer fine-grained control of writing ASCII files.

### 5. Binary file formats

#### 5.1. Matlab Files

Matlab files can be read and written using the package *R.matlab*<sup>[2]</sup>, which is available at CRAN and can be installed by `install.packages ("R.matlab")`.

```
spc.mat <- readMat ("spectra.mat")
```

If the `.mat` file was saved with compression, the additional package *Rcompression* is needed. It can be installed from omegahat:

```
install.packages("Rcompression", repos = "http://www.omegahat.org/R")
```

See the documentation of *R.matlab* for more details and possibly needed further packages.

`readMat` imports the `.mat` file's contents as a list. The variables in the `.mat` file are properly named elements of the list. The *hyperSpec* object can be created using `new`, see 2 (p. 3).

Again, you probably want to wrap the import of your matlab files into a function.



### 5.1.1. Matlab Export

*R.matlab*'s function `writeMat` can be used to write R objects into `.mat` files. To save an *hyperSpec* object `x` for use in Matlab, you most likely want to save:

- the wavelength axis as obtained by `wl (x)`,
- the spectra matrix as obtained by `x [[]]`, and
- possibly also the extra data as obtained by `x$. .`
- as well as the axis labels `labels (x)`.
- Alternatively, `x$. .` yields the extra data together with the spectra matrix.

However, it may be convenient to transform the saved data according to how it is needed in Matlab. The functions `as.long.df` and `as.wide.df` may prove useful for reshaping the data.

### 5.1.2. Import of Matlab files written by Cytospec

A custom import function for `.mat` files written by *Cytospec* is available:

Note that *Cytospec* files can contain multiple versions of the data, the so-called blocks. The block to be read can be specified with the `block` argument. `TRUE` will read all blocks into a list:

```
> read.mat.Cytospec ("mat.cytospec/cytospec.mat", blocks = TRUE)

[[1]]
hyperSpec object
  55 spectra
  5 data columns
  981 data points / spectrum
wavelength: [numeric] 499.12 501.77 ... 3100
data: (55 rows x 5 columns)
  1. x: [integer] 4 5 ... 7
  2. y: [integer] 1 1 ... 11
  3. block: [integer] 1 1 ... 1
  4. spc: [matrix981] 2112.9 2114.3 ... 2323.3
  5. filename: filename [character] mat.cytospec/cytospec.mat mat.cytospec/cytospec.mat ... mat.cytospec/cytospec.mat

[[2]]
hyperSpec object
  55 spectra
  5 data columns
  981 data points / spectrum
wavelength: [numeric] 499.12 501.77 ... 3100
data: (55 rows x 5 columns)
  1. x: [integer] 4 5 ... 7
  2. y: [integer] 1 1 ... 11
  3. block: [integer] 2 2 ... 2
  4. spc: [matrix981] 58.472 59.024 ... 262.5
  5. filename: filename [character] mat.cytospec/cytospec.mat mat.cytospec/cytospec.mat ... mat.cytospec/cytospec.mat
```

otherwise, select a block:

```
> read.mat.Cytospec ("mat.cytospec/cytospec.mat", blocks = 1)

hyperSpec object
  55 spectra
  5 data columns
  981 data points / spectrum
wavelength: [numeric] 499.12 501.77 ... 3100
data: (55 rows x 5 columns)
  1. x: [integer] 4 5 ... 7
```

```
2. y: [integer] 1 1 ... 11
3. block: [integer] 1 1 ... 1
4. spc: [matrix981] 2112.9 2114.3 ... 2323.3
5. filename: filename [character] mat.cytospec/cytospec.mat mat.cytospec/cytospec.mat ... mat.cytospec/cytospec.mat
```

### read.cytomat is deprecated.

`read.cytomat` has been renamed to `read.mat.Cytospec` to be more consistent with the general naming scheme of the file import functions.  
Please use `read.mat.Cytospec` instead.

## 5.2. ENVI Files

ENVI files are binary data accompanied by an ASCII header file. *hyperSpec*'s function `read.ENVI` can be used to import them. Usually, the header file name is the same as the binary data file name with the suffix replaced by `.hdr`. Otherwise, the header file name can be given via parameter *headerfile*.

As we experienced missing header files (Bruker's Opus software frequently produced header files without any content), the data that would usually be read from the header file can also be handed to `read.ENVI` as a list in parameter *header*. Arguments given in *header* replace corresponding entries of the header file. The help page gives details on what elements the list should contain, see also the discussion of ENVI files written by Bruker's OPUS software (section 6.2, p. 14).

Here is how to use `read.ENVI`:

```
> spc <- read.ENVI ("ENVI/example2.img")
> spc

hyperSpec object
  0 spectra
  3 data columns
  1738 data points / spectrum
wavelength: [numeric] 649.90 651.83 ... 3999.7
data: (0 rows x 3 columns)
  1. x: [integer]
  2. y: [integer]
  3. spc: [matrix1738]
```

Please see also the manufacturer specific notes in section 6.1, p. 14.

### Unit Tests

`read.ENVI`:

#### 5.2.1. ENVI Export

Use package *caTools* or *rgdal* with GDAL for writing ENVI files.

## 5.3. spc Files

Thermo Galactic's `.spc` file format can be imported by `read.spc`.

## Official File Format Documentation

The specification used to be available at Thermo Scientific. Anyone knowing where it moved please contact me (Claudia Beleites <chemometrie@beleites.de>) — I'm looking for a reasonably official website (i.e. at Thermo) rather than some random site with a copy.

A variety of sub-formats exists. *hyperSpec*'s import function `read.spc` does *not* support the old file format that was used before 1996. In addition, no test data with *w planes* was available — thus the import of such files could not be tested. If you come across such files, please contact the package maintainer (Claudia Beleites <chemometrie@beleites.de>).

The header and subheader blocks of spc files store additional information of pre-defined types (see the file format specification[3]). Further information can be stored in the so-called log block at the end of the file, and should be in a key-value format (although even the official example files do not always). This information is often useful (Kaiser's Hologram software e.g. stores the stage position in the log block).

`read.spc` has four arguments that allow fine-grained control of storing such information in the *hyperSpec* object:

`keys.hdr2data` parameters from the spc file and subfile headers that should become extra data columns

`keys.log2data` parameters from the spc file log block that should become extra data columns

`keys.*2log` parameters are deprecated because the logbook itself is deprecated

The value of these arguments can either be logical (amounting to either use all or none of the information in the file) or a character vector giving the names of the parameters that should be used. Note that the header file field names are always lowercase.

Here's how to find out what extra information could be read from the header and log:

```
> read.spc ("spc.Kaisermep/ebroAVII.spc", keys.hdr2data = TRUE)
```

```
hyperSpec object
  1 spectra
  34 data columns
  1340 data points / spectrum
wavelength: x/"a. u." [numeric] 1 2 ... 1340
data: (1 rows x 34 columns)
  1. z: x/"a. u." [numeric] 1
  2. z.end: x/"a. u." [numeric] 1
  3. ftflgs: [matrix8] FALSE FALSE ... FALSE
  4. fexper: [factor] General
  5. fexp: [integer] -128
  6. fnpts: [integer] 1340
  7. ffirst: [numeric] 1
  8. flast: [numeric] 1340
  9. fnsub: [integer] 1
 10. fxtype: [character] x/"a. u."
 11. fytype: [character] Counts
 12. fztype: [character] x/"a. u."
 13. fpost: [integer] 0
 14. fdate: [POSIXct, POSIXt] 1253590860
 15. fres: [character]
 16. fsource: [character]
 17. fspare: [matrix8] 0 0 ... 0
 18. fcmnt: [character]
 19. fcatxt: [character]
 20. flogoff: [integer] 5904
```

```

21. fmods: [integer] 0
22. fprocs: [integer] 0
23. flevel: [integer] 0
24. fsampin: [integer] 0
25. ffactor: [numeric] 0
26. fmethod: [character]
27. fzinc: [numeric] 0
28. fwplanes: [integer] 0
29. fwinc: [numeric] 0
30. fwtype: [character] x/"a. u."
31. .last.read: [numeric] 512
32. subfiledir: [numeric] 0
33. spc: Counts [matrix1340] 2782.7 2229.8 ... 932.02
34. filename: filename [character] spc.Kaisermap/ebroAVII.spc

> read.spc ("spc.Kaisermap/ebroAVII.spc", keys.log2data = TRUE)

hyperSpec object
  1 spectra
  55 data columns
  1340 data points / spectrum
wavelength: x/"a. u." [numeric] 1 2 ... 1340
data: (1 rows x 55 columns)
  1. z: x/"a. u." [numeric] 1
  2. z.end: x/"a. u." [numeric] 1
  3. Grams_File_Name: [character] d:\beleites\ebro\Map 20090921 180944\ebroAVII.spc
  4. HoloGRAMS_File_Name: [character] Unknown
  5. Acquisition_Date_Time: [character] 22.09.2009 03:41:30
  6. Lambda: [character] Low
  7. Accuracy_Mode: [character] High Speed
  8. Dark_subtracted: [character] Yes
  9. Dark_File_Name: [character] ebroAVGC.drk
 10. Auto_New_Dark_Curve: [character] No
 11. Background_subtracted: [character] No
 12. Background_File_Name: [character] <None>
 13. Intensity_Corrected: [character] Yes
 14. Intensity_Calibration_Available: [character] Yes
 15. Intensity_Correction_File: [character] c:\hologram\calibration\intensity\20090609aa.icl
 16. Intensity_Correction_Threshold: [character] 0,00%
 17. Intensity_Source_Correction: [character] No
 18. Intensity_Source_Correction_File: [character] <None>
 19. Comment: [character] <None>
 20. Cosmic_Ray_Filtering: [character] Yes
 21. Total_Cosmic_Count: [character] 38
 22. Exposure_Length: [character] 10000
 23. Accumulations: [character] 1
 24. Accumulation_Method: [character] Averaged
 25. Calibration_File: [character] C:\HoloGRAM\calibration\Wavelength\20090716ab.wcl
 26. Comment.1: [character]
 27. Temperature_Status: [character] At temperature
 28. Temperature: [character] -85,50
 29. HoloGRAMS_File_Version: [character] 4.1
 30. File_Type: [character] Hol
 31. Operator: [character] unknown
 32. Stage_X_Position: [character] 360
 33. Stage_Y_Position: [character] 1100
 34. Stage_Z_Position: [character] -16
 35. AutoFocusUsed: [character] Nein
 36. WLInterval: [character] 0,12
 37. CalInterval: [character] 0,90
 38. FFTFillFactor: [character] None
 39. FFTApT: [character] None
 40. SamplingMethod: [character] Linear
 41. Has_MultiPlex_Laser: [character] No
 42. External_Trigger: [character] No
 43. Laser_Wavelength: [character] 785,21

```

```

44. Default_Laser_Wavelength: [character] 785,21
45. Laser_Tracking: [character] False
46. Laser_Block_Active: [character] No
47. Pixel_Fill_minimum: [character] 26
48. Pixel_Fill_maximum: [character] 16762
49. Binning_Start: [character] 24
50. Binning_End: [character] 41
51. NumPoints: [character] 1340
52. First: [character] 1,000
53. last: [character] 1340,000
54. spc: Counts [matrix1340] 2782.7 2229.8 ... 932.02
55. filename: filename [character] spc.Kaisermap/ebroAVII.spc

```

.spc files may contain multiple spectra that do *not* share a common wavelength axis. In this case, `read.spc` returns a list of *hyperSpec* objects with one spectrum each. `collapse` may be used to combine this list into one *hyperSpec* object:

```

> barbiturates <- read.spc ("spc/BARBITUATES.SPC")
> save (barbiturates, file = "barbiturates.rda")
> class (barbiturates)

[1] "list"

> length (barbiturates)

[1] 286

> barbiturates <- do.call (collapse, barbiturates)
> barbiturates <- orderwl (barbiturates)
> barbiturates

hyperSpec object
  286 spectra
  4 data columns
  375 data points / spectrum
wavelength: frac(m, z)/frac(u, e) [numeric] 25.95 26.05 ... 244.05
data: (286 rows x 4 columns)
  1. z: t/min [numeric] 4.0272 4.0341 ... 5.9978
  2. z.end: t/min [numeric] 4.0272 4.0341 ... 5.9978
  3. spc: I/"a. u." [matrix375] NA NA ... NA + NA
  4. filename: filename [character] spc/BARBITUATES.SPC spc/BARBITUATES.SPC ... spc/BARBITUATES.SPC

> barbiturates [[1:10, , 25 ~ 30]]

      25.95 26.05 26.15 26.95 27.05 27.15 28.05 28.15 29.05 29.15 29.95
[1,]    NA    NA    NA    NA    562    NA    NA 11511  6146    NA    NA
[2,]    NA    NA    NA    NA    NA    618 10151    NA  5040    NA    NA
[3,]    NA    NA    NA    NA    638    NA    NA 10722  5253    NA    NA
[4,]    NA    NA    NA    NA    NA    NA 10548    NA  5865    NA    NA
[5,]    NA    NA    NA    NA    NA    NA    NA 10519  4664    NA    NA
[6,]    NA    NA    NA    NA    796    NA    NA 10519    NA  5110    NA    NA
[7,]    NA    NA    NA    NA    NA    NA    NA 10096    NA  4769    NA    907
[8,]    NA    NA    NA    NA    NA    NA    NA 10929  5400    NA    NA
[9,]    NA    NA    NA    NA    NA    NA    NA 10235    NA  4930    NA    NA
[10,]   NA    NA    NA    NA    NA    NA    NA 10663  4690    NA    799

```

## Unit Tests

```
read.spc: .....
```

**Deriving manufacturer specific import filters.** Please note that future changes inside the `read.spc` function are likely to occur. However, if you just post-process the *hyperSpec* object returned by `read.spc`, you should be fine.

## 6. Manufacturer-Specific Discussion of File Import

### 6.1. Manufacturer Specific Import Functions

Many spectrometer manufacturers provide a function to export their spectra into ASCII files. The functions discussed above are written in a very general way, and are highly customizable. I recommend wrapping these calls with the appropriate settings for your spectra format in an import function. Please consider contributing such import filters to *hyperSpec*: send me the documented code (for details see the box at the beginning of this document). If you are able to import data of any format not mentioned in this document (even without the need of new converters), please let me know (details again in the box at the beginning of this document).

### 6.2. Bruker FT-IR Imaging

We use `read.ENVI` to import IR-Images collected with a Bruker Hyperion spectrometer with OPUS software. As mentioned above, the header files are frequently empty. We found the necessary information to be:

```
> header <- list (samples = 64 * no.images.in.row,
+               lines = 64 * no.images.in.column,
+               bands = no.data.points.per.spectrum,
+               `data type` = 4,
+               interleave = "bip")
```

No spatial information is given in the ENVI header (if written). The lateral coordinates can be setup by specifying origin and pixel size for *x* and *y* directions. For details please see the help page.

The proprietary file format of the Opus software is not yet supported.

### 6.3. Nicolet FT-IR Imaging

Also Nicolet saves imaging data in ENVI files. These files use some non-standard keywords in the header file that should allow to reconstruct the lateral coordinates as well as the wavelength axes and units for wavelength and intensity axis. *hyperSpec* has a specialized function `read.ENVI.Nicolet` that uses these header entries.

It seems that the position of the first spectrum is recorded in  $\mu\text{m}$ , while the pixel size is in mm. Thus a flag *nicolet.correction* is provided that divides the pixel size by 1000. Alternatively, the correct offset and pixel size values may be given as function arguments.

```
> spc <- read.ENVI.Nicolet ("ENVI/example2.img", nicolet.correction = TRUE)
> spc ## dummy sample with all intensities zero
```

```
hyperSpec object
 0 spectra
 3 data columns
 1738 data points / spectrum
wavelength: [numeric] 649.90 651.83 ... 3999.7
data: (0 rows x 3 columns)
 1. x: [numeric]
 2. y: [numeric]
 3. spc: [matrix1738]
```

### 6.4. Varian/Agilent FT-IR Imaging

Agilent (Varian) uses a variant of ENVI (with binary header). A specialized form of `read.ENVI` will be coming soon.

## 6.5. Kaiser Optical Systems Raman

Spectra obtained using Kaiser's Hologram software can be saved either in their own .hol format and imported into Matlab (from where the data may be written to a .mat file readable by *R.matlab*'s `readMat`). Hologram can also write ASCII files and .spc files. We found working with .spc files the best option.

The spectra are usually interpolated by Hologram to an evenly spaced wavelength (or  $\Delta\tilde{\nu}$ ) axis unless the spectra are saved in a by-pixel manner. In this case, the full spectra consist of two files with consecutive file names: one for the low and one for the high wavenumber region. See the example for .spc import.

### 6.5.1. Kaiser Optical Systems ASCII Files

The ASCII files are long format that can be imported by `read.txt.long` (see section 4, p. 5).

We experienced two different problems with these files:

1. If the instrument computer's locale is set so that also the decimal separator is a comma, commas are used both as decimal and as column separator.
2. Values with a decimal fraction of 0 are written with decimal separator but no further digits (e.g. 2,). This may be a problem for certain conversion functions (`read.table` works fine, though).

Thus care must be taken:

```
> ## 1. import as character
> tmp <- scan ("txt.Kaiser/test-lo-4.txt", what = rep ("character",4), sep = ",")
> tmp <- matrix (tmp, nrow = 4)
> ## 2. concatenate every two columns by a dot
> wl <- apply (tmp [1:2, ], 2, paste, collapse = '.')
> spc <- apply (tmp [3:4, ], 2, paste, collapse = '.')
> ## 3. convert to numeric and create hyperSpec object
> spc <- new ("hyperSpec", spc = as.numeric (spc), wavelength = as.numeric (wl))
```

### 6.5.2. Kaiser Optical Systems Raman Maps

*hyperSpec* provides the function `read.spc.KaiserMap` to easily import spatial collections of .spc files written by Kaiser's Hologram software. The filenames of all .spc files to be read into one *hyperSpec* object can be provided either as a character vector or as a wildcard expression (e.g. "path/to/files/\*.spc").

The data for the following example was saved with wavelength axis being camera pixels rather than Raman shift. Thus two files for each spectrum were saved by Hologram. Thus, a file name pattern is difficult to give and a vector of file names is used instead:

```
> files <- Sys.glob ("spc.Kaisermmap/*.spc")
> spc.low <- read.spc.KaiserMap (files [seq (1, length (files), by = 2)])
> spc.high <- read.spc.KaiserMap (files [seq (2, length (files), by = 2)])
> wl (spc.high) <- wl (spc.high) + 1340
> spc
```

```
hyperSpec object
  1 spectra
  1 data columns
  2110 data points / spectrum
wavelength: [numeric] 121.5 122.4 ... 2019.6
data: (1 rows x 1 columns)
  1. spc: [matrix2110] 1202.51 770.35 ... 141.01
```

## 6.6. Renishaw Raman

Renishaw's Wire software comes with an file format converter. This program can produce a long ASCII format, .spc, or .jdx files.

We experienced that the conversion to .spc is *not* fully reliable: maps were saved as depth profile, loosing all spatial information. In addition, an evenly spaced wavelength axis was produced, although this was de-selected in the converter. We therefore recommend using the ASCII format. Otherwise the import using `read.spc` worked.

### 6.6.1. Renishaw ASCII data

An optimized import function for the ASCII files is available: `scan.txt.Renishaw`. The file may be compressed via `gzip`, `bzip2`, `xz` or `lzma`. zip compressed files are read via `scan.zip.Renishaw`. The ASCII files can easily become very large, particularly with linefocus- or streamline imaging. `scan.txt.Renishaw` provides two mechanisms to avoid running out of memory during data import. The file may be imported in chunks of a given number of lines (see the last example). `scan.txt.Renishaw` can calculate the correct number of wavelengths (i.e. data points per spectrum) if the system command `wc` is available on your computer.

In addition, the processing of the long ASCII format into the spectra matrix is done by reshaping the vector of intensities into a matrix. This process does not allow any missing values in the data. *Therefore it is not possible to import multi-spectra files with individually "zapped" spectra using `scan.txt.Renishaw`.*

The second argument to `scan.txt.Renishaw` decides what type of experiment is imported. Supported types are:

```
"xyspc"      maps, images, multiple spectra with x and y coordinates (default)
"spc"        single spectrum
"depth", "zspc" depth series
"ts"         time series
```

Instead of a file name, `scan.txt.Renishaw` accepts also a connection.

```
> paracetamol <- scan.txt.Renishaw ("txt.Renishaw/paracetamol.txt", "spc")
> paracetamol
```

```
hyperSpec object
  1 spectra
  2 data columns
  4064 data points / spectrum
wavelength: Delta * tilde(nu)/cm-1 [numeric] 96.787 98.143 ... 3200.1
data: (1 rows x 2 columns)
  1. spc: I / a.u. [matrix4064] 2056.5 2224.8 ... 299.23
  2. filename: filename [gzfile, connection] 5
```

```
> save (paracetamol, file = "paracetamol.rda")
> scan.txt.Renishaw ("txt.Renishaw/laser.txt.gz", "ts")
```

```
hyperSpec object
  84 spectra
  3 data columns
  140 data points / spectrum
wavelength: Delta * tilde(nu)/cm-1 [numeric] -199.08 -196.90 ... 99.934
data: (84 rows x 3 columns)
  1. t: t / s [numeric] 0 2 ... 5722
  2. spc: I / a.u. [matrix140] 29.801 32.093 ... 81.3
  3. filename: filename [integer] 5 5 ... 5
```



Very large files can be read in chunks to save memory:

```
> scan.txt.Renishaw ("txt.Renishaw/chondro.txt", nlines = 1e5, nspc = 875)
```

```
.....
hyperSpec object
  861 spectra
  4 data columns
  1272 data points / spectrum
wavelength: Delta * tilde(nu)/cm^-1 [numeric] 601.62 602.66 ... 1802.2
data: (861 rows x 4 columns)
  1. y: y/(mu * m) [numeric] -4.77 -4.77 ... 19.23
  2. x: x/(mu * m) [numeric] -11.55 -10.55 ... 22.45
  3. spc: I / a.u. [matrix1272] 501.72 518.53 ... 151.92
  4. filename: filename [integer] 5 5 ... 5
```

R accepts a variety of compressed file formats for ASCII files:

```
> scan.txt.Renishaw ("txt.Renishaw/chondro.gz")
> scan.txt.Renishaw ("txt.Renishaw/chondro.xz")
> scan.txt.Renishaw ("txt.Renishaw/chondro.lzma")
> scan.txt.Renishaw ("txt.Renishaw/chondro.gz")
> scan.txt.Renishaw ("txt.Renishaw/chondro.bz2")
> scan.zip.Renishaw ("txt.Renishaw/chondro.zip")
```

## 6.7. Horiba / Jobin Yvon (e.g. LabRAM)

Horiba's Labspec software (e.g. LabRAM spectrometers) saves spectra in a wide ASCII format which is read by `read.txt.Horiba`, e.g.:

```
> spc <- read.txt.Horiba ("txt.HoribaJobinYvon/ts.txt",
+                        cols = list (t = "t / s", spc = "I / a.u.",
+                        .wavelength = expression (Delta * tilde (nu) / cm^-1))
+                        )
> spc
```

```
hyperSpec object
  100 spectra
  3 data columns
  1024 data points / spectrum
wavelength: Delta * tilde(nu)/cm^-1 [numeric] 2135.2 2133.3 ... -122.41
data: (100 rows x 3 columns)
  1. t: t / s [numeric] 0.000 5.834 ... 566.77
  2. spc: I / a.u. [matrix1024] 6244 6278 ... 117
  3. filename: filename [character] txt.HoribaJobinYvon/ts.txt txt.HoribaJobinYvon/ts.txt ... txt.HoribaJobinYvon/ts.txt
```

Note that Labspec .txt files can contain lots of spectra with zero intensity: Labspec saves a complete rectangular grid even if only part of a map was measured. These spectra are by removed by default if option `file.remove.emptyspc` is TRUE (the default).

For convenience, functions to further wrappers to import maps (`read.txt.Horiba.xy`) and time series (`read.txt.Horiba.t`) are provided.

## 6.8. Andor Solis

Andor Solis exports ASCII files that can be read with `scan.asc.Andor`:

```
> scan.asc.Andor("asc.Andor/ASCII-Andor-Solis.asc")
```

```

hyperSpec object
  5 spectra
  2 data columns
  63 data points / spectrum
wavelength: [numeric] 161.41 165.73 ... 423.65
data: (5 rows x 2 columns)
  1. spc: [matrix63] 3404 3402 ... 3415
  2. filename: filename [character] asc.Andor/ASCII-Andor-Solis.asc asc.Andor/ASCII-Andor-Solis.asc asc.Andor/ASCII-Andor-Solis.asc

```

## 6.9. Witec

The Witec project software supports exporting spectra as Thermo Galactic `.spc` files.

```

> read.spc ("spc.Witec/Witec-timeseries.spc")
> read.spc ("spc.Witec/Witec-Map.spc")

```

`.spc` is in general the recommended format for *hyperSpec* import. For imaging data no spatial information for the set of spectra is provided (in version 2.10 this export option is not supported).

Imaging data (but also single spectra and time series) can be exported as ASCII X and Y files (Save ASCII X and Save ASCII Y, not supported in version 4). These can be read by `scan.dat.Witec`:

```

> scan.dat.Witec ("txt.Witec/Witec-timeseries-x.dat")
> scan.dat.Witec (filex = "txt.Witec/Witec-Map-x.dat",
+               points.per.line = 5, lines.per.image = 5, type = "map")

```

Note that the Y data files also contain a wavelength information, but (at least Witec Project 2.10) this information is always wavelength in nm, not Raman shift in wavenumbers: this is provided by the X data file only.

Another option is Witec's txt table ASCII export (Export → Table), which produces ASCII files with each row corresponding to one wavelength. The first column contains the wavelength axis, all further columns contain one spectrum each column. Such files can be read with `scan.txt.Witec`:

```

> scan.txt.Witec ("txt.Witec/Witec-timeseries_no.txt")

```

`scan.txt.Witec` determines the number of wavelengths automatically.

Note that there are several Export Filter Options. Here you can determine, which units should be used for the export (see XUnits tab). In addition, it is possible to export two additional header lines containing information about spectra labels and units. Therefore parameters `hdr.label` and `hdr.units` have to be set properly. Otherwise, either an error will be displayed like

```

Error in scan(file, what, nmax, sep, dec, quote, skip, nlines, na.strings, :
  scan() expected 'a real', got 'rel.'

```

or the one or two wavelengths will be skipped.

Depending on the used export options the header files should look like:

```

with exported labels and units headerlines:
X-Axis          Time Series_000_Spec.Data 1(0) Time Series_000_Spec.Data 1(1)
rel. 1/cm      CCD cts                      CCD cts
8.77367E+01    9.95000E+02                      9.94000E+02
9.10310E+01    9.96000E+02                      9.94000E+02

```

```

with exported labels headerline:
X-Axis          Time Series_000_Spec.Data 1(0) Time Series_000_Spec.Data 1(1)
8.77367E+01    9.95000E+02                      9.94000E+02
9.10310E+01    9.96000E+02                      9.94000E+02
9.43239E+01    9.92000E+02                      9.92000E+02

```

```

with exported units headerline:
rel. 1/cm      CCD cts      CCD cts

```

```
8.77367E+01 9.95000E+02 9.94000E+02
9.10310E+01 9.96000E+02 9.94000E+02
9.43239E+01 9.92000E+02 9.92000E+02
```

without headerline:

```
87.737 995.000 994.000
91.031 996.000 994.000
94.324 992.000 992.000
97.615 989.000 989.000
```

For imaging data set parameter *type* to "map". If the label header is exported, the spatial information can be extracted from this line. Otherwise, at least one, *points.per.line* or *lines.per.image*, has to be given manually, if not, a warning will be shown.

For line scans and z-stacks use *type* = "single" because the provided information are looking the same like for timeseries, so no further information can be extracted from the header files.

Since version 4 WITec Project offers the Graph ASCII export (Export → Graph ASCII) which produces three ASCII files, named Header containing additional information, X-Axis containing the wavelength values and Y-Axis containing the spectra one spectrum in each column. Data exported in this way can be read with `scan.txt.Witec.Graph`:

```
> scan.txt.Witec.Graph ("txt.Witec/Witec-timeseries (Header).txt")
> scan.txt.Witec.Graph ("txt.Witec/Witec-Map (Header).txt", type = "map")
```

This function reads the spectra files automatically, if they are named properly and extracts additional information of the header file. As for the other Witec functions it is possible to read image data by by selecting *type* = "map". Line scans and z-stacks should be read as single spectra.

## 7. Writing your own Import Function

This section gives examples how to write import functions. The first example implements an import filter for an ASCII file format basically from scratch. The second example shows how to implement more details for an already existing import filter.

### 7.1. A new ASCII Import Function: `scan.txt.PerkinElmer`

The raw spectra of the `flu` data set (see also the respective vignette) are in PerkinElmer's ASCII file format, one spectrum per file.

We need a function that automatically reads all files specified by a pattern, such as `*.txt`. In order to gain speed, the spectra matrix should be preallocated after the first file is read.

A short examination of the files (`flu*.txt` in directory `txt.PerkinElmer`) reveals that the actual spectrum starts at line 55, after a line containing `#DATA`. For now, no other information of the files is to be extracted. It is thus easier to skip the first 54 lines than searching for the line after `#DATA`.

A fully featured import function should support:

- Reading multiple files by giving a pattern
- hand further arguments to `scan`. This comes handy in case the function is used later to import other data types.
- Also skipping 54 lines would be a weird default, so we rather require it to be given explicitly.
- The same applies for the axis labels: they should default to reasonable settings for fluorescence spectra, but it should be possible to change them if needed.

- The usual log entry arguments should be supplied.
- A sanity check should be implemented: stop with an error if a file does not have the same wavelength axis as the others.
- Finally, if no file can be found, an empty *hyperSpec* object is a reasonable result: There is no need to stop with an error, but it is polite to issue an additional warning.

```

scan.txt.PerkinElmer.R
scan.txt.PerkinElmer <- function (files = "*.txt", ..., label = list ()) {
  ## set some defaults
  long <- list (files = files, ..., label = label)

  label <- modifyList (list (.wavelength = expression (lambda / nm),
                           spc = expression (I[f1] / "a.u.")),
                      label)

  ## find the files
  files <- Sys.glob (files)

  if (length (files) == 0){
    warning ("No files found.")
    return (new ("hyperSpec"))
  }

  ## read the first file
  buffer <- matrix (scan (files [1], ...), ncol = 2, byrow = TRUE)

  ## first column gives the wavelength vector
  wavelength <- buffer [, 1]

  ## preallocate the spectra matrix:
  ## one row per file x as many columns as the first file has
  spc <- matrix (ncol = nrow (buffer), nrow = length (files))

  ## the first file's data goes into the first row
  spc [1, ] <- buffer [, 2]

  ## now read the remaining files
  for (f in seq (along = files)[-1]) {
    buffer <- matrix (scan (files [f], ...), ncol = 2, byrow = TRUE)

    ## check whether they have the same wavelength axis
    if (! all.equal (buffer [, 1], wavelength))
      stop (paste(files [f], "has different wavelength axis."))

    spc [f, ] <- buffer[, 2]
  }

  ## make the hyperSpec object
  new ("hyperSpec", wavelength = wavelength, spc = spc,
      data = data.frame (file = files), label = label)
}

```

Note how the labels are set. The label with the special name `.wavelength` corresponds to the wavelength axis, all data columns should have a label with the same name. The spectra are always in a data column called `spc`.

Thus,

```

> source ("scan.txt.PerkinElmer.R")
> scan.txt.PerkinElmer ("txt.PerkinElmer/flu?.txt", skip = 54)

hyperSpec object
  6 spectra

```

```

2 data columns
181 data points / spectrum
wavelength: lambda/nm [numeric] 405.0 405.5 ... 495
data: (6 rows x 2 columns)
1. file: [factor] txt.PerkinElmer/flu1.txt txt.PerkinElmer/flu2.txt ... txt.PerkinElmer/flu6.txt
2. spc: I[f1]/"a.u." [matrix181] 27.150 66.801 ... 294.65

```

imports the spectra.

This function is not exported by *hyperSpec*. While it is already useful for importing files, it is not yet general enough to work immediately with new data: the the file header is completely ignored. Thus information like the excitation wavelength is lost.

## 7.2. Deriving a More Specific Function: read.ENVI.Nicolet

The function `read.ENVI.Nicolet` is a good example for a more specific import filter derived from a general filter for the respective file type. Nicolet FT-IR Imaging software saves some non-standard keywords in the header file of the ENVI data. These information can be used to reconstruct the  $x$  and  $y$  axes of the images. The units of the spectra are saved as well.

`read.ENVI.Nicolet` thus first adjusts the parameters for `read.ENVI`. Then `read.ENVI` does the main work of importing the file. The resulting *hyperSpec* object is post-processed according to the special header entries.

For using the function, see section 6.3 (p. 14).

```

----- read.ENVI.Nicolet.R -----
## TODO: get Makefile to care care of this if the version in pkg changes

read.ENVI.Nicolet <- function (file = stop ("read.ENVI: file name needed"), headerfile = NULL,

## the additional keywords to interprete must be read from headerfile
  headerfile <- .find.ENVI.header (file, headerfile)
  keys <- readLines (headerfile)
  keys <- .read.ENVI.split.header (keys)
  keys <- keys [c ("description", "z plot titles", "pixel size")]

  header <- modifyList (keys, header)

  ## most work is done by read.ENVI
  spc <- read.ENVI (file = file, headerfile = headerfile, header = header, ...,
    x = if (is.na (x)) 0 : 1 else x,
    y = if (is.na (y)) 0 : 1 else y)

### From here on processing the additional keywords in Nicolet's ENVI header *****

## z plot titles -----
## default labels
label <- list (x = expression (~ (x, micro * m)),
  y = expression (~ (y, micro * m)),
  spc = 'I / a.u.',
  .wavelength = expression (tilde (nu) / cm^-1))

## get labels from header information
if (!is.null (header$'z plot titles')){
  pattern <- "^[[:blank:]]*([[:print:]]^,)+[[:blank:]]*,.*$"
  tmp <- sub (pattern, "\\1", header$'z plot titles')

  if (grepl ("Wavenumbers (cm-1)", tmp, ignore.case = TRUE))
    label$.wavelength <- expression (tilde (nu) / cm^-1)

```

```

else
  label$.wavelength <- tmp

pattern <- "^[[:blank:]]*[[[:print:]]^,]+,[[[:blank:]]*([[[:print:]]^,]+).*$"
tmp <- sub (pattern, "\\1", header$'z plot titles')
if (grepl ("Unknown", tmp, ignore.case = TRUE))
  label$spc <- "I / a.u."
else
  label$spc <- tmp
}

## modify the labels accordingly
spc@label <- modifyList (label, spc@label)

## set up spatial coordinates -----
## look for x and y in the header only if x and y are NULL
## they are in `description` and `pixel size`

## set up regular expressions to extract the values
p.description <- paste ("^Spectrum position [[[:digit:]]+ of [[[:digit:]]+ positions,",
                        "X = ([[[:digit:]]+), Y = ([[[:digit:]]+)$")
p.pixel.size <- "^[[:blank:]]*([[[:digit:]]+),[[[:blank:]]*([[[:digit:]]+).*$"

if (is.na (x) && is.na (y) &&
    ! is.null (header$description) && grepl (p.description, header$description) &&
    ! is.null (header$'pixel size') && grepl (p.pixel.size, header$'pixel size')) {

  x [1] <- as.numeric (sub (p.description, "\\1", header$description))
  y [1] <- as.numeric (sub (p.description, "\\2", header$description))

  x [2] <- as.numeric (sub (p.pixel.size, "\\1", header$'pixel size'))
  y [2] <- as.numeric (sub (p.pixel.size, "\\2", header$'pixel size'))

  ## it seems that the step size is given in mm while the offset is in micron
  if (nicolet.correction) {
    x [2] <- x [2] * 1000
    y [2] <- y [2] * 1000
  }

  ## now calculate and set the x and y coordinates
  x <- x [2] * spc$x + x [1]
  if (! any (is.na (x)))
    spc@data$x <- x

  y <- y [2] * spc$y + y [1]
  if (! any (is.na (y)))
    spc@data$y <- y
}

spc
}

```

### 7.3. Deriving import filters for spc files

Please note that future changes inside the `read.spc` function are likely to occur. However, if you just post-process the *hyperSpec* object returned by `read.spc`, you should be fine.

### References

- [1] Robert S. McDonald and Jr. Paul A. Wilks. Jcamp-dx: A standard form for the exchange of infrared spectra in computer readable form. *Applied Spectroscopy*, 42(1):151–162, 1988.

- [2] Henrik Bengtsson. *R.matlab: Read and Write MAT Files and Call MATLAB from Within R*, 2016. URL <https://CRAN.R-project.org/package=R.matlab>. R package version 3.6.0.
- [3] *Universal Data Format Specification*. Galactic Industries Corp., 1997. URL [http://ftirsearch.com/features/converters/gspc\\_udf.zip](http://ftirsearch.com/features/converters/gspc_udf.zip).

## A. File Import Functions by Format

Format	Manufacturer	Function	section	Notes
<i>ASCII file formats</i>				
Andor Solis ASCII	Andor (Raman)	<code>scan.asc.Andor</code>	6.8, p. 17	
ASCII long		<code>read.txt.long</code>	4, p. 5	
ASCII long	Renishaw (Raman)	<code>scan.txt.Renishaw</code>	6.6.1, p. 16	
ASCII long	Kaiser (Raman)	<code>read.txt.long</code>	6.5.1, p. 15	<i>Not</i> recommended, see discussion
ASCII long	Perkin Elmer (Fluorescence)	<code>read.txt.PerkinElmer</code>	7.1, p. 19	Reads multiple files, needs to be sourced.
ASCII wide		<code>read.txt.wide</code>	4, p. 5	
ASCII wide	Horiba Jobin Yvon	<code>read.txt.wide</code>	6.7, p. 17	e. g. LabRAM spectrometers
ASCII wide transposed	Witec (Raman)	<code>scan.txt.Witec</code>	6.9, p. 18	Export Table
JCAMP-DX		-	4.2, p. 6	see <code>read.jdx</code>
JCAMP-DX	Renishaw (Raman)	-	4.2, p. 6	not available
JCAMP-DX	Shimadzu (GC,GC-MS)	<code>jcamp-dx</code>	4.2, p. 6	import for subset of the JCAMP-DX standard
JCAMP-DX	PerkinElmer (Infrared)	<code>jcamp-dx</code>	4.2, p. 6	import for subset of the JCAMP-DX standard
Witec ASCII	Witec (Raman)	<code>scan.dat.Witec</code>	6.9, p. 18	Save ASCII X, Save ASCII Y
Witec Graph ASCII	Witec (Raman)	<code>scan.txt.Witec.Graph</code>	6.9, p. 18	Export Table in 3 separate files (Header, X-Axis, Y-Axis)
<i>binary file formats</i>				
array		-	2, p. 3	
ENVI		<code>read.ENVI</code>	5.2, p. 10	
ENVI	Bruker (Infrared Imaging)	<code>read.ENVI</code>	6.2, p. 14	
ENVI	Nicolet (Infrared Imaging)	<code>read.ENVI.Nicolet</code>	6.3, p. 14	
hol	Kaiser (Raman)	-	6.5, p. 15	via Matlab
Matlab	Matlab	<code>R.matlab::readMat</code>	5.1, p. 8	
Matlab	Cytospec	<code>read.mat.Cytospec</code>	5.1.2, p. 9	
matrix		-	2, p. 3	
Opus	Bruker (Infrared Imaging)	-	6.2, p. 14	
spc		<code>read.spc</code>	5.3, p. 10	
spc	Kaiser (Raman Map)	<code>read.spc.KaiserMap</code>	6.5.2, p. 15	Reads multiple files
spc	Kaiser (Raman)	<code>read.spc</code>	5.3, p. 10	Reads multiple files
spc	Renishaw (Raman)	<code>read.spc</code>	6.6.1, p. 16	<i>Not</i> recommended, see discussion of ASCII files.
spc	Witec (Raman)	<code>read.spc</code>	5.3, p. 10	spc export not available for images
spc	Horiba (Raman)	<code>read.spc</code>	5.3, p. 10	
spe	Princeton Instruments (Raman)	<code>read.spe</code>	??, p. ??	WinSpec



## B. File Import Functions by Manufacturer

Manufacturer	Format	Function	section	Notes
<i>Manufacturers</i>				
Andor (Raman)	Andor Solis ASCII	<code>scan.asc.Andor</code>	6.8, p. 17	
Bruker (Infrared Imaging)	ENVI	<code>read.ENVI</code>	6.2, p. 14	
Bruker (Infrared Imaging)	Opus	-	6.2, p. 14	
Cytospec	Matlab	<code>read.mat.Cytospec</code>	5.1.2, p. 9	
Horiba (Raman)	spc	<code>read.spc</code>	5.3, p. 10	
Horiba Jobin Yvon	ASCII wide	<code>read.txt.wide</code>	6.7, p. 17	e. g. LabRAM spectrometers
Kaiser (Raman)	ASCII long	<code>read.txt.long</code>	6.5.1, p. 15	<i>Not</i> recommended, see discussion
Kaiser (Raman)	hol	-	6.5, p. 15	via Matlab
Kaiser (Raman Map)	spc	<code>read.spc.KaiserMap</code>	6.5.2, p. 15	Reads multiple files
Kaiser (Raman)	spc	<code>read.spc</code>	5.3, p. 10	Reads multiple files
Matlab	Matlab	<code>R.matlab::readMat</code>	5.1, p. 8	
Nicolet (Infrared Imaging)	ENVI	<code>read.ENVI.Nicolet</code>	6.3, p. 14	
PerkinElmer (Infrared)	JCAMP-DX	<code>jcamp-dx</code>	4.2, p. 6	import for subset of the JCAMP-DX standard
Perkin Elmer (Fluorescence)	ASCII long	<code>read.txt.PerkinElmer</code>	7.1, p. 19	Reads multiple files, needs to be sourced.
Princeton Instruments (Raman)	spe	<code>read.spe</code>	??, p. ??	WinSpec
Renishaw (Raman)	ASCII long	<code>scan.txt.Renishaw</code>	6.6.1, p. 16	
Renishaw (Raman)	JCAMP-DX	-	4.2, p. 6	not available
Renishaw (Raman)	spc	<code>read.spc</code>	6.6.1, p. 16	<i>Not</i> recommended, see discussion of ASCII files.
Shimadzu (GC,GC-MS)	JCAMP-DX	<code>jcamp-dx</code>	4.2, p. 6	import for subset of the JCAMP-DX standard
Witec (Raman)	Witec ASCII	<code>scan.dat.Witec</code>	6.9, p. 18	Save ASCII X, Save ASCII Y
Witec (Raman)	ASCII wide transposed	<code>scan.txt.Witec</code>	6.9, p. 18	Export Table
Witec (Raman)	Witec Graph ASCII	<code>scan.txt.Witec.Graph</code>	6.9, p. 18	Export Table in 3 separate files (Header, X-Axis, Y-Axis)
Witec (Raman)	spc	<code>read.spc</code>	5.3, p. 10	spc export not available for images

## C. File Import Functions by Spectroscopy

Spectroscopy	Format	Manufacturer	Function	section	Notes
Fluorescence	ASCII long	Perkin Elmer	<code>read.txt.PerkinElmer</code>	7.1, p. 19	Reads multiple files, needs to be sourced.
GC,GC-MS	JCAMP-DX	Shimadzu	<code>jcamp-dx</code>	4.2, p. 6	import for subset of the JCAMP-DX standard
Infrared	JCAMP-DX	PerkinElmer	<code>jcamp-dx</code>	4.2, p. 6	import for subset of the JCAMP-DX standard
Infrared Imaging	ENVI	Bruker	<code>read.ENVI</code>	6.2, p. 14	
Infrared Imaging	ENVI	Nicolet	<code>read.ENVI.Nicolet</code>	6.3, p. 14	
Infrared Imaging	Opus	Bruker	-	6.2, p. 14	
Raman	Andor Solis ASCII	Andor	<code>scan.asc.Andor</code>	6.8, p. 17	
Raman	ASCII long	Renishaw	<code>scan.txt.Renishaw</code>	6.6.1, p. 16	
Raman	ASCII long	Kaiser	<code>read.txt.long</code>	6.5.1, p. 15	<i>Not</i> recommended, see discussion
Raman	ASCII wide transposed	Witec	<code>scan.txt.Witec</code>	6.9, p. 18	Export Table
Raman	hol	Kaiser	-	6.5, p. 15	via Matlab
Raman	JCAMP-DX	Renishaw	-	4.2, p. 6	not available
Raman	spc	Kaiser	<code>read.spc</code>	5.3, p. 10	Reads multiple files
Raman	spc	Renishaw	<code>read.spc</code>	6.6.1, p. 16	<i>Not</i> recommended, see discussion of ASCII files.
Raman	spc	Witec	<code>read.spc</code>	5.3, p. 10	spc export not available for images
Raman	spc	Horiba	<code>read.spc</code>	5.3, p. 10	
Raman	spe	Princeton Instruments	<code>read.spe</code>	??, p. ??	WinSpec
Raman	Witec ASCII	Witec	<code>scan.dat.Witec</code>	6.9, p. 18	Save ASCII X, Save ASCII Y
Raman	Witec Graph ASCII	Witec	<code>scan.txt.Witec.Graph</code>	6.9, p. 18	Export Table in 3 separate files (Header, X-Axis, Y-Axis)
Raman Map	spc	Kaiser	<code>read.spc.KaiserMap</code>	6.5.2, p. 15	Reads multiple files

## D. Unit Test Results

"jcamp-dx/AMA1.DX"	nrow "1"	ncol "2"	nwl "3601"
"jcamp-dx/AMA2.DX"	nrow "1"	ncol "2"	nwl "3601"
"jcamp-dx/AMA3.DX"	nrow "1"	ncol "2"	nwl "3601"
"jcamp-dx/br_154_1.DX"	nrow "1"	ncol "2"	nwl "1216"
"jcamp-dx/BRUKAFFN.DX"	nrow "1"	ncol "2"	nwl "16384"
"jcamp-dx/BRUKPAC.DX"	nrow "1"	ncol "2"	nwl "16384"
	nrow	ncol	nwl

```

"jcamp-dx/ISAS_MS1.DX"          "1"          "2"          "26"
      nrow          ncol          nwl
"jcamp-dx/LABCALC.DX"          "1"          "2"          "3435"
      nrow          ncol          nwl
"jcamp-dx/PE1800.DX"          "1"          "2"          "3301"
      nrow          ncol          nwl
"jcamp-dx/testjose.dx"          "2"          "2"          "87"
      nrow          ncol          nwl
"jcamp-dx/sign-rustam.jdx"          "1"          "2"
      nwl
      "3955"
      nrow          ncol          nwl
"jcamp-dx/PE-IR/br_1.DX"          "1"          "2"          "1216"
      nrow          ncol          nwl
"jcamp-dx/PE-IR/br_2.DX"          "1"          "2"          "1216"
      nrow          ncol          nwl
"jcamp-dx/PE-IR/br_3.DX"          "1"          "2"          "1216"
      nrow          ncol          nwl
"jcamp-dx/PE-IR/br_4.DX"          "1"          "2"          "1216"
      nrow          ncol          nwl
"jcamp-dx/PE-IR/br_5.DX"          "1"          "2"          "1216"
      nrow          ncol
"jcamp-dx/PE-IR/fort_1.DX"          "1"          "2"
      nwl
      "1216"
      nrow          ncol
"jcamp-dx/PE-IR/fort_2.DX"          "1"          "2"
      nwl
      "1216"
      nrow          ncol
"jcamp-dx/PE-IR/fort_3.DX"          "1"          "2"
      nwl
      "1216"
      nrow          ncol
"jcamp-dx/PE-IR/fort_4.DX"          "1"          "2"
      nwl
      "1216"
      nrow          ncol
"jcamp-dx/PE-IR/fort_5.DX"          "1"          "2"
      nwl
      "1216"
      nrow          ncol          nwl
"jcamp-dx/PE-IR/lp_1.DX"          "1"          "2"          "1216"
      nrow          ncol          nwl
"jcamp-dx/PE-IR/lp_2.DX"          "1"          "2"          "1216"
      nrow          ncol          nwl
"jcamp-dx/PE-IR/lp_3.DX"          "1"          "2"          "1216"
      nrow          ncol          nwl
"jcamp-dx/PE-IR/lp_4.DX"          "1"          "2"          "1216"
      nrow          ncol          nwl
"jcamp-dx/PE-IR/lp_5.DX"          "1"          "2"          "1216"
      nrow          ncol          nwl
"jcamp-dx/GMD_20111121_MDN35_ALK_JCAMP.txt"          "1"
      ncol          nwl
      "2"          "525"

```

```

Failed -----
1. Failure: JCAMP-DX example files (@test-read.jdx.R#68) -----
jcamp-dx/GMD_20111121_MDN35_ALK_JCAMP.txt not equivalent to checksums[f].
1/1 mismatches
x[1]: "5cda6469197bba5f1efa1764266bcffa"
y[1]: "a118914f132ba4f02c7cdf2b939ba513"

```

DONE =====

## Index

- Agilent
  - ENVI, 14
- Andor Solis
  - ASCII, 17
- ASCII
  - Andor Solis, 17
  - compressed, 16
  - JCAMP-DX, 6
  - long, 5
    - Fluorescence, 19
    - Kaiser, 15
    - PerkinElmer, 19
    - Raman, 15, 16
    - Renishaw, 16
  - samples in columns, 5
  - transposed, 5
  - wide, 5
    - Horiba, 17
    - Horiba Jobin Yvon, 17
    - LabRAM, *see* Horiba
  - Witec, 18
  - zip, 16
- atomic emission
  - NIST, 7
- Bruker
  - AXS, 5
  - ENVI, 10, 14
  - powder diffraction, 5
  - x-ray, 5
- create hyperSpec object, 3
- Cytospec, 9
  - Matlab, 9
- ENVI
  - Agilent, 14
  - Bruker, 10, 14
  - Infrared, 10, 14
    - Nicolet, 21
  - Map, 10, 14, 21
  - Nicolet, 14, 21
  - Varian, 10
- Fluorescence
  - ASCII long, 19
  - PerkinElmer
    - ASCII, 19
- FT-IR, *see* Infrared
- Graph ASCII
  - Witec, 18
- hol
  - Kaiser, 15
- Horiba
  - ASCII
    - wide, 17
    - spc, 10
- Horiba Jobin Yvon
  - ASCII
    - wide, 17
- hyperSpec object
  - create, 3
- Image, *see* Map
- Infrared
  - ENVI, 10, 14, 21
  - JCAMP-DX, 6
  - Map, 21
  - Nicolet, 21
  - PerkinElmer, 6
- initialize hyperSpec object, 3
- JCAMP-DX
  - ASCII, 6
  - Infrared, 6
  - PerkinElmer, 6
  - Shimadzu, 6
- jdx, *see* JCAMP-DX
- Kaiser
  - ASCII long, 15
  - hol, 15
  - Map, 15
  - spc, 10, 15
- LabRAM, *see* Horiba
- LabRam
  - spc, 10
- LabSpec
  - spc, 10
- Map, 15
  - ENVI, 10, 14
  - Kaiser, 15
  - Raman, 15
- Matlab, 8
  - Cytospec, 9
- new hyperSpec object, 3
- Nicolet
  - ENVI, 14, 21
  - Infrared, 21
  - Map, 21
- NIST
  - atomic emission, 7
- PerkinElmer
  - ASCII long, 19
  - Fluorescence, 19
  - Infrared, 6
  - JCAMP-DX, 6
  - powder diffraction
    - Bruker, 5
- Raman
  - Andor Solis
    - ASCII, 17
  - ASCII long, 15, 16
  - hol, 15
  - HoloGram, 10
  - Horiba, 10
    - ASCII wide, 17

- Horiba Jobin Yvon
  - ASCII wide, 17
- Kaiser, 10, 15
- LabRAM, *see* Horiba
- LabRam, 10
- LabSpec, 10
- Map, 15
- Renishaw, 10
  - ASCII, 16
  - spc, 16
- spc, 10, 15
- Witec
  - ASCII, 18
  - Export Table, 18
  - Graph ASCII, 18
  - Save ASCII X, Save ASCII Y, 18
  - spc, 18
- reference
  - NIST
    - atomic emission, 7
- Renishaw
  - ASCII long, 16
  - Raman, 16
  - spc, 10, 16
- Shimadzu
  - GC-MS, 6
  - JCAMP-DX, 6
- spc, 10
  - Kaiser, 10, 15
  - Raman, 10, 15, 16
  - Renishaw, 10, 16
  - TriVista, 10
  - Witec, 18
- TriVista
  - spc, 10
- Varian, *see* Agilent
  - ENVI, 10
- Witec
  - ASCII, 18
  - Graph ASCII, 18
- x-ray
  - Bruker, 5

## Session Info

R version 3.3.2 (2016-10-31)

Platform: x86\_64-pc-linux-gnu (64-bit)

Running under: Ubuntu 16.04.1 LTS

locale:

```
[1] LC_CTYPE=de_DE.UTF-8      LC_NUMERIC=C              LC_TIME=de_DE.UTF-8
[4] LC_COLLATE=de_DE.UTF-8   LC_MONETARY=de_DE.UTF-8  LC_MESSAGES=de_DE.UTF-8
[7] LC_PAPER=de_DE.UTF-8     LC_NAME=C                 LC_ADDRESS=C
[10] LC_TELEPHONE=C           LC_MEASUREMENT=de_DE.UTF-8 LC_IDENTIFICATION=C
```

attached base packages:

```
[1] grid      stats      graphics  grDevices  utils      datasets  methods   base
```

other attached packages:

```
[1] digest_0.6.10          testthat_1.0.2          hyperSpec_0.98-20161117 ggplot2_2.2.0
[5] lattice_0.20-34
```

loaded via a namespace (and not attached):

```
[1] Rcpp_0.12.7          magrittr_1.5           munsell_0.4.3         svUnit_0.7-12
[5] colorspace_1.3-0    R6_2.1.2              plyr_1.8.4           tools_3.3.2
[9] gtable_0.2.0        R.oo_1.20.0           latticeExtra_0.6-28  R.matlab_3.6.0
[13] lazyeval_0.2.0      assertthat_0.1        tibble_1.2           crayon_1.3.1
[17] RColorBrewer_1.1-2  R.utils_2.3.0         memoise_1.0.0        scales_0.4.1
[21] R.methodsS3_1.7.1
```